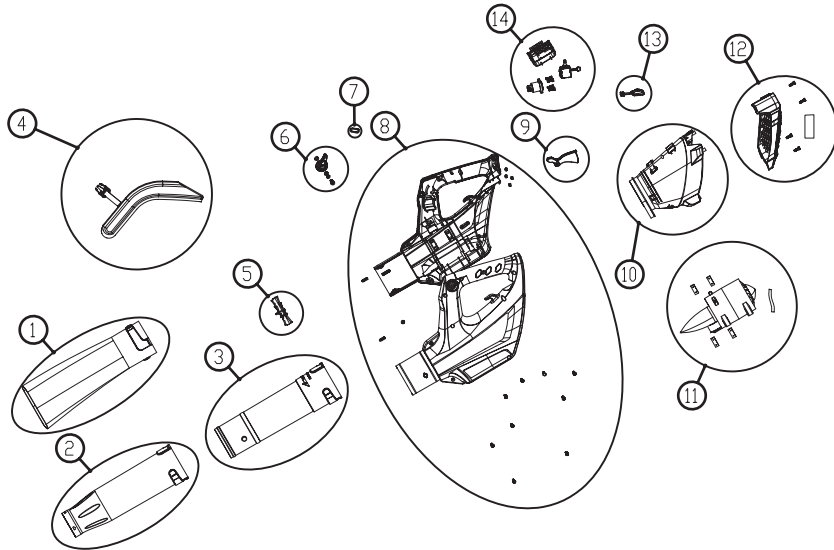




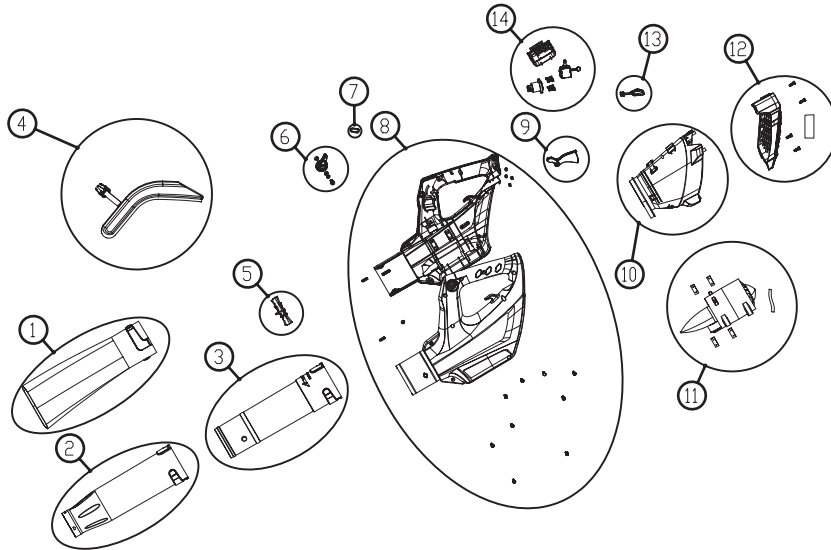
Blower 82B1000 2400286



POSITION	PNC	DESCRIPTION	QTY	UOM
1	RA341081816	Oblate tube assembly	1	set
1-1		Oblate tube	1	pcs
2	RA341071816	Rounded tube assembly	1	set
2-1		Rounded tube	1	pcs
3	RA341061816	Top tube assembly	1	set
3-1		Top tube	1	pcs
4	RA37902144	Belt assembly	1	set
4-1		Belt	1	pcs
5	RA341021816B	Cross assembly	1	set
5-1		Cross	1	pcs
6	RA341041816M	Cruise control assembly	1	set
6-1		Screw m5*25	1	pcs
6-2		Spring washer	1	pcs
6-3		Cruise control	1	pcs
6-4		Flat washer	2	pcs
7	RA33301511	Hook assembly.	1	set
7-1		Hook	1	pcs
8	RA341121816D	Housing assembly.	1	set
8-1		Right housing	1	pcs
8-2		U-buckle	2	pcs
8-3		Lock nut m5	1	pcs
8-4		Left housing	1	pcs
8-5		Hexagonal socket pan head screw	8	pcs
8-6		"Hexagonal socket pan head self-tapping screw ST4.2*25-F"	1	pcs
8-7		Nut M3	4	pcs
9	RA341031816M	Switch trigger assembly.	1	set
9-1		Switch trigger	1	pcs
10	RA341011816	Inlet tube assembly.	1	set



Blower 82B1000 2400286



POSITION	PNC	DESCRIPTION	QTY	UOM
10-1		Inlet tube	1	pcs
11	RA361001816	Moto assembly.	1	set
11-1		Moto	1	pcs
11-2		Motor shock pad	4	pcs
11-3		Shrinkable tube ϕ 6	22	cm
12	RA341031807C	inlet guard assembly	1	set
12-1		Air inlet cover	1	pcs
12-2		Hexagonal socket pan head self-tapping screw ST4.2*25-F	4	pcs
13	RA364021816	Waterproofed assembly.	1	set
13-1		Waterproofed part	1	pcs
14	RA362011816	PCB assembly.	1	set
14-1		PCB	1	pcs
14-2		Speed switch	1	pcs
14-3		Hexagonal socket screw M3	4	pcs
14-4		Female connector	1	pcs
14-5		Shrinkable tube ϕ 6	22	cm

