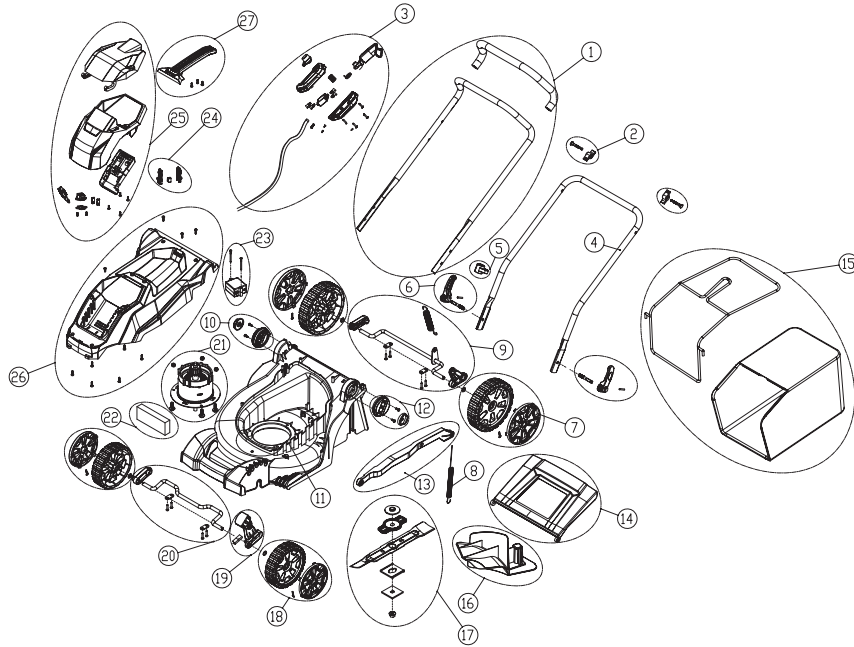



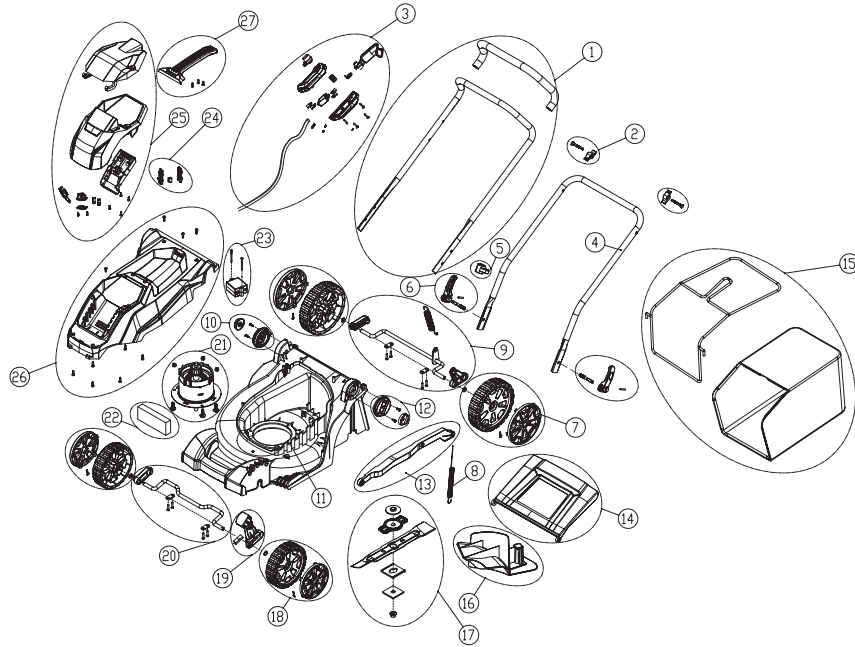
Lawn Mower 40LM35 2501186




POSITION	PNC	DESCRIPTION	QTY	UOM
1	RA333012321AB	14 inch upper handle-rod assembly	1	set
1-1		14 inch upper handle-rod	1	pcs
1-2		Hand-rest sponge	1	pcs
1-3		Foam sleeve	1	pcs
2	RA3410835BE	Locking knob assembly	2	set
2-1		Knob	1	pcs
2-2		Half-oval head square neck bolt	1	pcs
3	RA311032397	Switch box assembly	1	set
3-1		Switch box handle	1	pcs
3-2		Switch box handle torsion spring	1	pcs
3-3		Button return spring	1	pcs
3-4		Switch box upper casing	1	pcs
3-5		Switch box button	1	pcs
3-6		Cut-off switch	1	pcs
3-7		Horizontal insertion terminal sheath	6	pcs
3-8		Horizontal flag insertion terminal 6.3X0.8	6	pcs
3-9		Power cord	1	pcs
3-10		Internal crimping board	1	pcs
3-11		Hexagonal socket pan head self-tapping screw ST4*16-F	2	pcs
3-12		Hexagonal socket self-tapping screw ST4.2*18-F	4	pcs
3-13		Switch box lower casing	1	pcs
3-14		2PIN plug	1	pcs
3-15		Wire connector female terminal	2	pcs
3-16		Wire connector male terminal	2	pcs
3-17		Wire (14AWG black)	65	cm
3-18		Heat shrink tubing φ6	20	cm
3-19		Electrical lead (14AWG red)	10	cm
3-20		Electrical lead (white)	20	cm
3-21		Electrical lead	0.4	M
3-22		Heat shrinkable tubing φ8	10	cm
3-23		Magnetic ring	1	pcs



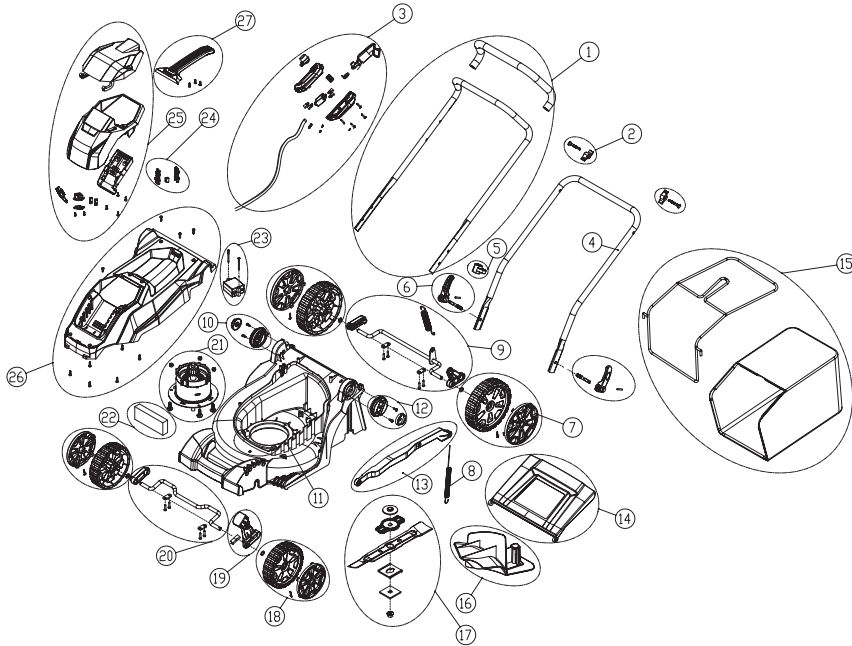
Lawn Mower 40LM35 2501186



POSITION	PNC	DESCRIPTION	QTY	UOM
3-24		Inductor	2	pcs
4	RA333041558AB	Lower handle-rod	1	set
4-1		14 inch lower handle-rod	1	pcs
5	RA3411135V1	Hanging hook	1	set
5-1		Hanging hook	1	pcs
6	RA311052397	Quick clamp handle assembly	2	set
6-1		Stud	1	pcs
6-2		Elastic cylindrical pin 5*26	1	pcs
6-3		Black clamp handle	1	pcs
7	RA341121558	7"wheel assembly	2	set
7-1		7 inch wheel decorative cover	1	pcs
7-2		Split pin	1	pcs
7-3		7 inch wheel	1	pcs
7-4		Axle spacer	1	pcs
8	RA333071559	Rear cover pull spring	2	set
8-1		Rear cover pull spring	1	pcs
9	RA311121558	Rear wheel axle assembly	1	set
9-1		14 inch rear wheel axle	1	pcs
9-2		Hexagonal socket pan head self-tapping screw ST4.2*20-C	4	pcs
9-3		Height adjustment tableting	2	pcs
9-4		Axle positioning block	1	pcs
9-5		Height adjustment pull spring	1	pcs
9-6		Rear axle bracket	1	pcs
10	RA341201558AB	Right clamping block assembly	1	set
10-1		Lower handle-rod clamp pad block	1	pcs
10-2		Hexagonal socket self-tapping screw ST4.2*18-F	2	pcs
10-3		Lower handle-rod right pad block	1	pcs
11	RA341011558A	House casing	1	set
11-1		Crimping board	1	pcs
11-2		Hexagonal socket	2	pcs
11-3		14 inch casing	1	pcs

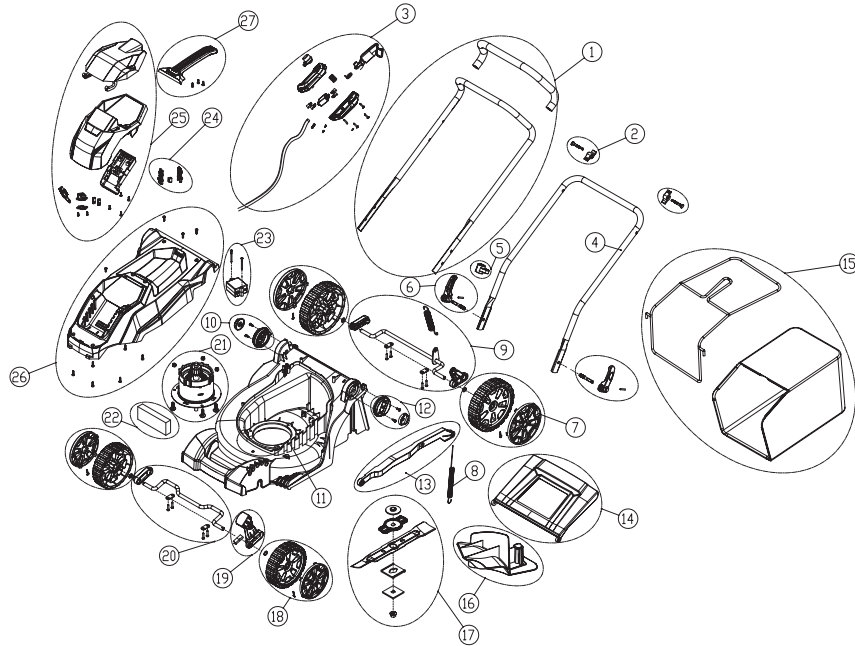


Lawn Mower 40LM35 2501186



POSITION	PNC	DESCRIPTION	QTY	UOM
12	RA341221558AB	Left clamping block assembly	1	set
12-1		Lower handle-rod left pad block	1	pcs
12-2		Hexagonal socket self-tapping screw ST4.2*18-F	2	pcs
12-3		Lower handle-rod clamp pad block	1	pcs
13	RA341081558AB	Height adjustment connecting rod assembly	1	set
13-1		Height adjustment connecting rod	1	pcs
13-2		Hexagonal socket self-tapping screw with washer	1	pcs
14	RA341051558AB	Rear cover assembly	1	set
14-1		Rear cover	1	pcs
15	RA311102397	Grass collecting bag assembly	1	set
15-1		14 inch grass collecting bag bracket	1	pcs
15-2		14 inch grass collecting bag	1	pcs
16	RA341091558	Rear plug assembly	1	set
16-1		Rear plug	1	pcs
17	RA33304493	Blade assembly	1	set
17-1		Shaft lock nut M10X1.25 - as seperate part	1	pcs
17-2		Square baffle - as seperate assy	1	pcs
17-3		Blade baffle	1	pcs
17-4		14" forward blade - as seperate part	1	pcs
17-5		Blade mounting holder	1	pcs
17-6		Motor bushing	1	pcs
18	RA341101558	6"wheel assembly	2	set
18-1		6 inch wheel decorative cover	1	pcs
18-2		Split pin	1	pcs
18-3		6 inch wheel	1	pcs
18-4		Axle spacer	1	pcs
19	RA341071558AB	Height adjustment handle	1	set
19-1		Height adjustment handle	1	pcs
19-2		Jump ring pcs	1	pcs
20	RA333011558	Front wheel axle assembly	1	set
20-1		14 inch rear wheel axle	1	pcs

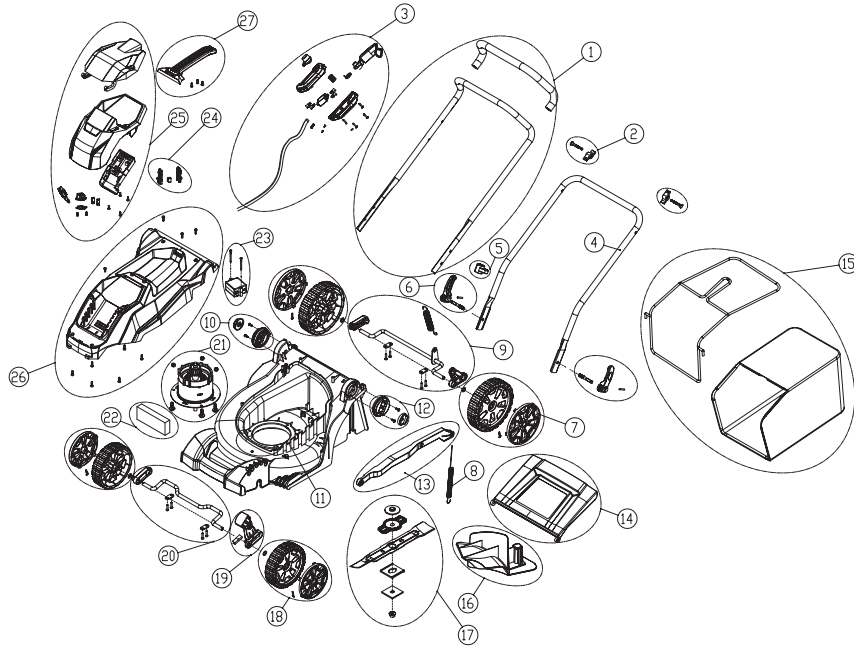
CRAMER Lawn Mower 40LM35 2501186



POSITION	PNC	DESCRIPTION	QTY	UOM
20-2		Hexagonal socket pan head self-tapping screw ST4.2*20-C	4	pcs
20-3		Axle spacer	2	pcs
20-4		Axle positioning block	1	pcs
21	RA311881558	Motor assembly	1	set
21-1		Bolt and flat washer combination M6×25	3	pcs
21-2		Self-locking nut M6 (black Dacromet coated salt spray 48H)	3	pcs
21-3		40V push mower motor	1	pcs
22	RA339021558	Clump weight	1	set
22-1		Clump weight	1	pcs
23	RA36202487T1	Pcb assembly	1	set
23-1		40V single blade control panel, without energy saving protection (TE terminal)	1	pcs
23-2		Hexagonal socket self-tapping screw ST3.5X40	2	pcs
24	RA311051479AB	Key assembly	1	set
24-1		Left key shell	1	pcs
24-2		80v key male insert pcs	1	pcs
24-3		Right key shell	1	pcs
25	RA341031558V	Key base assembly	1	set
25-1		80V female insert pcs	2	pcs
25-2		Key holder	1	pcs
25-3		Key holder pressure sheet	1	pcs
25-4		Hexalobular internal pan head self-tapping screw	2	pcs
25-5		housing insert seat	1	pcs
25-6		Shrinkable tube φ8	10	cm
25-7		Wire(14AWG black)	40	cm
25-8		Shrinkable tube φ6	10	cm
25-9		Wire(14AWG red)	60	cm
25-10		Wire(yellow)	40	cm
25-11		3PIN Plug	1	pcs
25-12		Wire connector female terminal	3	pcs



Lawn Mower 40LM35 2501186



POSITION	PNC	DESCRIPTION	QTY	UOM
25-13		Battery pack transparent cover	1	pcs
25-14		Battery pack housing	1	pcs
25-15		Battery pack holder	1	pcs
25-16		Hexagonal socket self-tapping screw ST3.5×10-F	4	pcs
25-17		Electrical lead (14AWG red)	40	cm
25-18		B terminal	2	pcs
25-19		Nylon tie, white	4	pcs
26	RA341021558AB	Housing assembly	1	set
26-1		Hexagonal socket self-tapping screw ST4.2×18-F	9	pcs
26-2		Upper housing	1	pcs
26-3		Hexagonal socket self-tapping screw ST4.2×12-F	1	pcs
27	RA341061558A	Handle assembly	1	set
27-1		Handle	1	pcs
27-2		Hexagonal socket self-tapping screw ST4.2×12-F	4	pcs

