



REPAIR PARTS MANUAL
MODEL NO. 992311
Lawn Tractor

CRAFTSMAN®

586469626

HOW TO USE THIS MANUAL

This manual is designed to provide the customer with a means to identify the parts on his/her tractor when ordering repair parts. The illustrations may or may not represent the actual assemblies; therefore, it is not recommended to use this manual as a guide to assemble or disassemble the tractor. Some hardware and parts are drawn larger in order to more readily identify them.

Each tractor has its own model number.

The model number for your tractor can be found on the fender under the seat.

When ordering parts, always give the following information:

- Product - Lawn Tractor
- MODEL NUMBER - **992311**
- Part Number
- Part Description

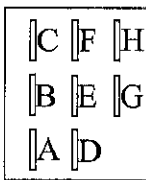
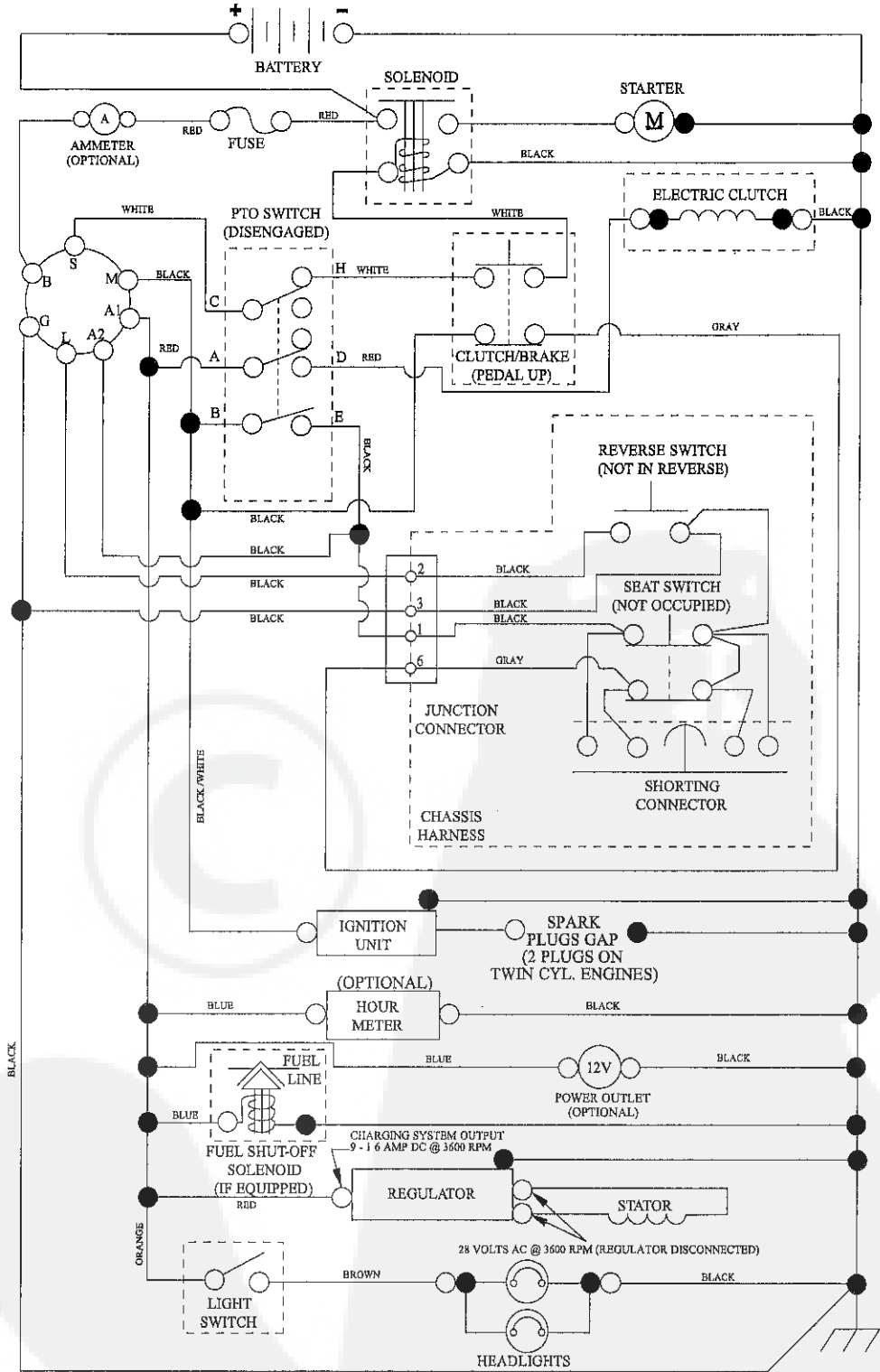
TABLE OF CONTENTS

| | |
|----------------------------------|-------------------|
| SCHEMATIC | 3 |
| ELECTRICAL..... | 4-5 |
| CHASSIS | 6-7 |
| DRIVE..... | 8-9 |
| ENGINE..... | 10-11 |
| STEERING | 12 |
| SEAT | 13 |
| MOWER DECK | 14-15 |
| MOWER LIFT..... | 16 |
| DECALS..... | 17 |
| TRANSAXLE BREAKDOWN | 18-19 |
| ENGINE BREAKDOWN..... | 20-23 |
| WARRANTY..... | BACK COVER |

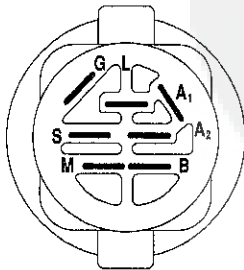
TRACTOR -- MODEL NUMBER 917.992311

SCHEMATIC

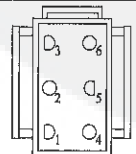
SCH12



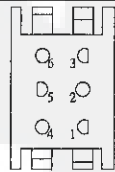
PTO SWITCH (MATING SIDE)



| POSITION | CIRCUIT "MAKE" |
|--------------|----------------|
| OFF | M+G+A1 |
| RUN/OVERRIDE | B+A1 |
| RUN | B+A1 L+A2 |
| START | B + S + A1 |



CHASSIS HARNESS CONNECTOR (MATING SIDE)



DASH HARNESS CONNECTOR

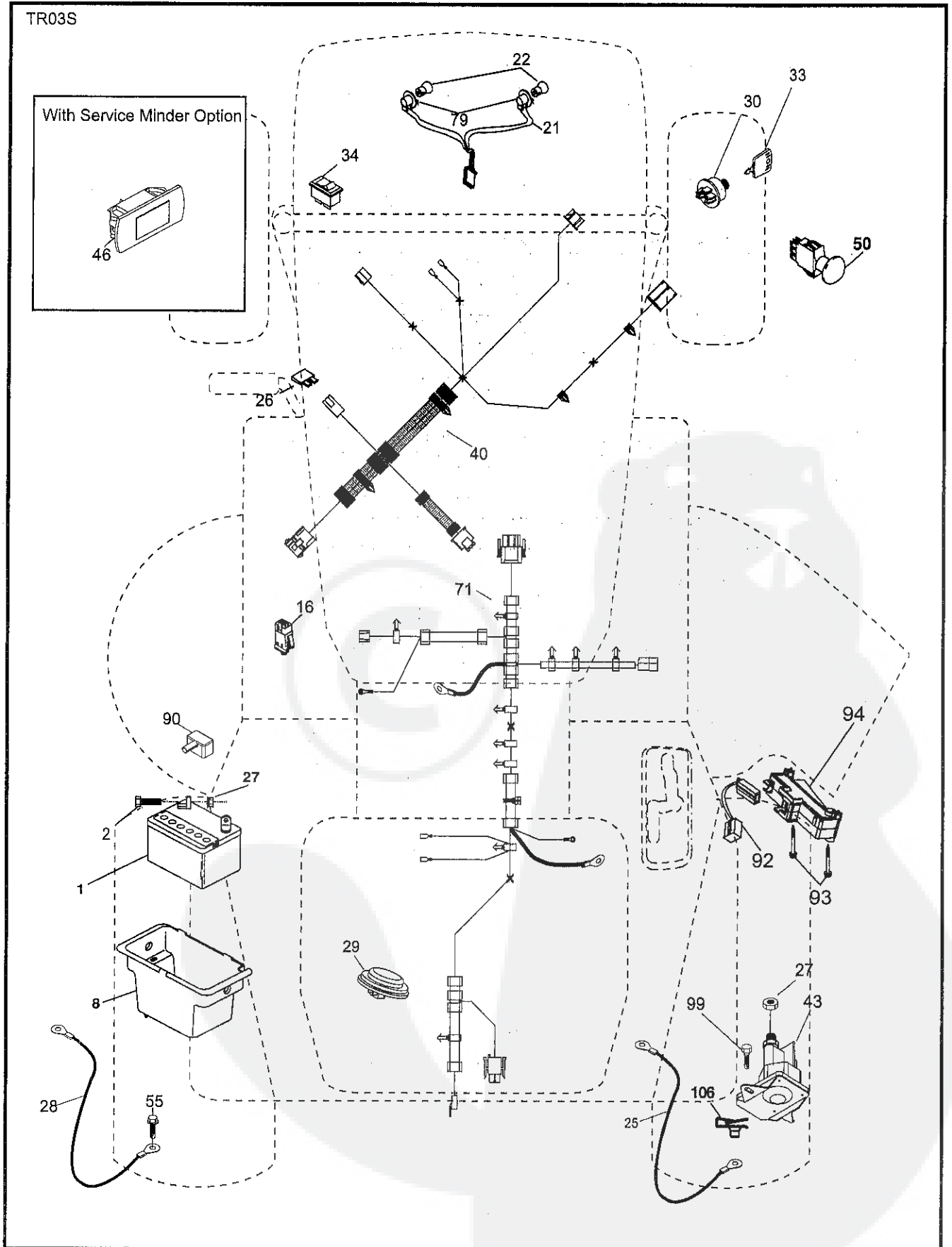
WIRING INSULATED CLIPS
NOTE: IF WIRING INSULATED CLIPS WERE REMOVED FOR SERVICING OF UNIT, THEY SHOULD BE RE-INSTALLED TO PROPERLY SECURE YOUR WIRING.

NON-REMOVABLE CONNECTIONS

REMOVABLE CONNECTIONS

TRACTOR -- MODEL NUMBER 917.992311

ELECTRICAL



ELECTRICAL

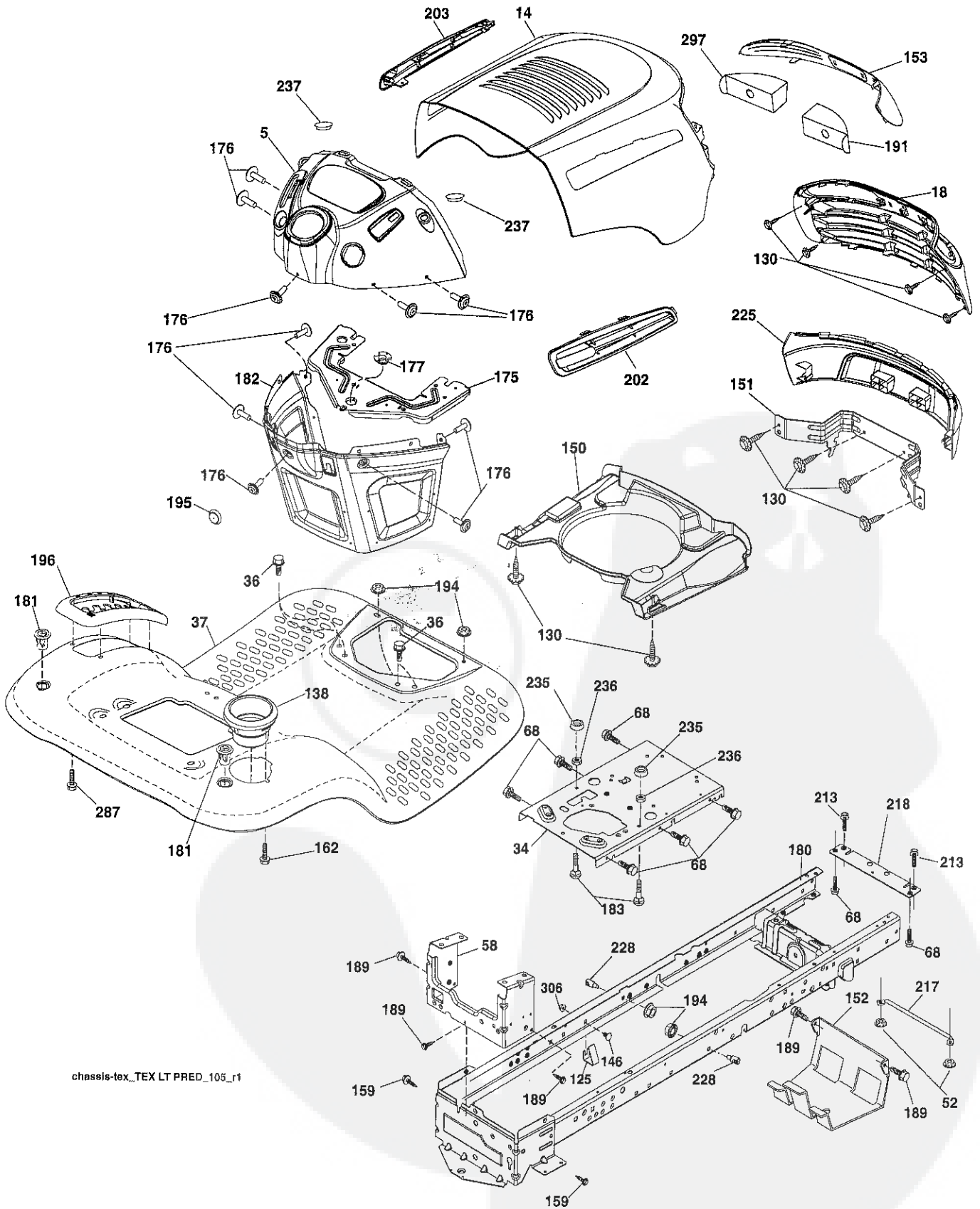
TRACTOR - - MODEL NUMBER 917.992311

| KEY NO. | PART NO. | DESCRIPTION |
|---------|-----------|---|
| 1 | 163465 | Battery |
| 2 | 74760412 | Bolt Hex Hd 1/4-20 unc x 3/4 |
| 8 | 193228 | Box Battery |
| 16 | 176138 | Switch Interlock Push-In |
| 21 | 400252 | Harness Socket Light w/4152J |
| 22 | 4152J | Bulb Light |
| 25 | 581498001 | Cable Starter |
| 26 | 175158 | Fuse |
| 27 | 73510400 | Nut Keps Hex 1/4-20 unc |
| 28 | 421686 | Cable, Ground |
| 29 | 401545 | Switch, Seat |
| 30 | 193350 | Switch, Ign |
| 33 | 411934 | Key/Chain |
| 34 | 110712X | Switch Light / Reset |
| 40 | 4001104 | Harness Ign. Dash (if equipped with front solenoid) |
| -- | 581023201 | Harness Ign. Dash (if equipped with rear solenoid) |
| 41 | 17720408 | Screw Thd Cut 1/4-20 x 1/2 |
| 42 | 131563 | Cover, Terminal |
| 43 | 192507 | Solenoid |
| 50 | 174651 | Switch PTO |
| 55 | 17060512 | Screw Thdrol 5/16-18 x 3/4 TYTT |
| 71 | 441544 | Harness Ign. Chassis (if equipped with front solenoid) |
| -- | 581023001 | Harness Ign. Chassis (if equipped with rear solenoid) |
| 79 | 175242 | Bulbholder Asm. Incan Descent |
| 90 | 435395 | Cover Terminal Battery |
| 92 | 196615 | Harness Pigtail |
| 93 | 192540 | Screw Plastite |
| 94 | 191834 | Module Reverse |
| 99 | 17670412 | Screw Hexwsh Thdrl 1/4-20 x 3/4 |
| 106 | 174814 | Palnut 1/4 Lugs |

NOTE: All component dimensions given in U.S. inches
1 inch = 25.4 mm

TRACTOR -- MODEL NUMBER 917.992311

CHASSIS ASSEMBLY



chassis-tex_TEX LT PRED_105_r1

TRACTOR - - MODEL NUMBER 917.992311

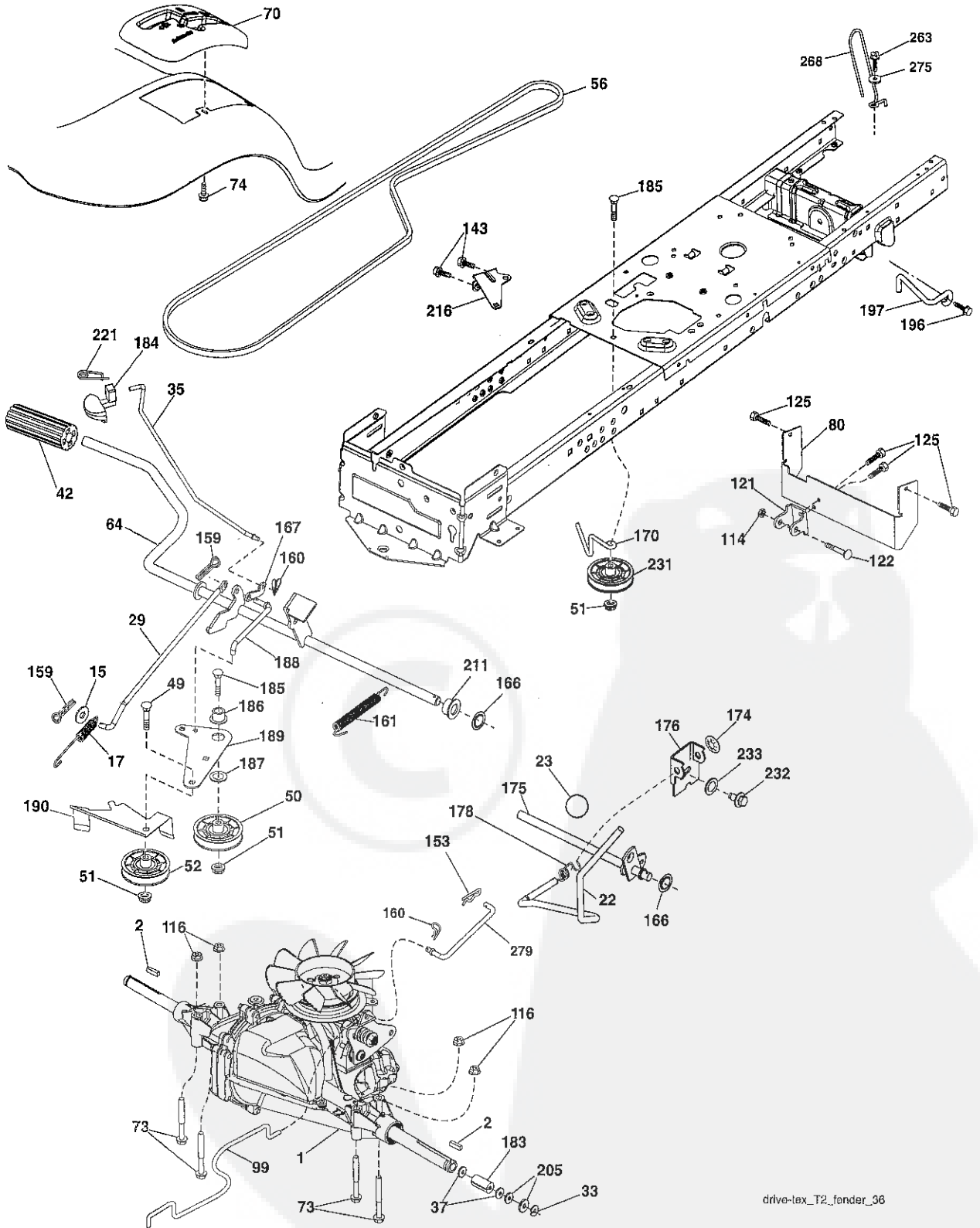
CHASSIS ASSEMBLY

| KEY NO. | PART NO. | DESCRIPTION |
|----------------|-----------------|----------------------------------|
| 5 | 400800X428 | Dash |
| 14 | 198416X615 | Hood |
| 18 | 423156 | Grille |
| 34 | 580910801 | Plate Engine |
| 36 | 17060512 | Screw 5/16-18 x 3/4 |
| 37 | 414872X615 | Fender |
| 52 | 73680500 | Nut Crown Lock 5/16-18 |
| 58 | 412280 | Drawbar Upper |
| 68 | 17490508 | Screw Thdrol 5/16-18 x 1/2 |
| 125 | 581684801 | Clip Fuel Line |
| 130 | 416358 | Screw #10 x 0.750 |
| 138 | 193224X428 | Cupholder |
| 146 | 581857901 | Bolt |
| 150 | 400267 | Duct Heat Hood |
| 151 | 187568 | Bracket Pivot |
| 152 | 199535 | Shield Browning/Debris |
| 153 | 400550X599 | Lens |
| 159 | 17000612 | Screw Hexwsh Thdrol 3/8-16 x 3/4 |
| 162 | 142432 | Screw Hex Wsh Hi-Lo 1/4 x 1/2 |
| 175 | 199472 | Crossmember |
| 176 | 400776 | Screw 10-24 x 5/8 Wshd Qdrx |
| 177 | 195228 | Bushing Steering |
| 180 | 415063 | Chassis |
| 181 | 193102X428 | Bushing Mtg. Fender Crgo. |
| 182 | 407176 | Dash Lower |
| 183 | 74520520 | Bolt Full Thd 5/16-18 x 1-1/4 |
| 189 | 17000512 | Screw 5/16-18 x 3/4 |
| 191 | 416502 | Insert Reflective RH |
| 194 | 73900500 | Nut Lock Hex Flange 5/16-18 |
| 195 | 404951X428 | Plug Dash Service Minder |
| 196 | 414579 | Console Asm. Deck Lift |
| 202 | 580427401 | Vent Hood Side Panel RH |
| 203 | 580427501 | Vent Hood Side Panel LH |
| 213 | 74760512 | Bolt Hex HD 5/16-18 unc x 3/4 |
| 217 | 409167 | Rod Pivot Hood |
| 218 | 196395 | X-Piece Hoodstop |
| 225 | 400549X615 | Bumper |
| 228 | 195161 | Stud Fastener |
| 235 | 406129 | Spacer Fender |
| 236 | 73930500 | Nut Center Lock 5/16-18 |
| 237 | 403704 | Plug Mount Cargo |
| 287 | 17600406 | Screw 1/4-20 x 3/8 |
| 297 | 401827 | Insert Reflective LH |
| 306 | 73900600 | Nut Lock |

NOTE: All component dimensions given in U.S. inches
1 inch = 25.4 mm

TRACTOR -- MODEL NUMBER 917.992311

GROUND DRIVE



drive-tex_T2_fender_36

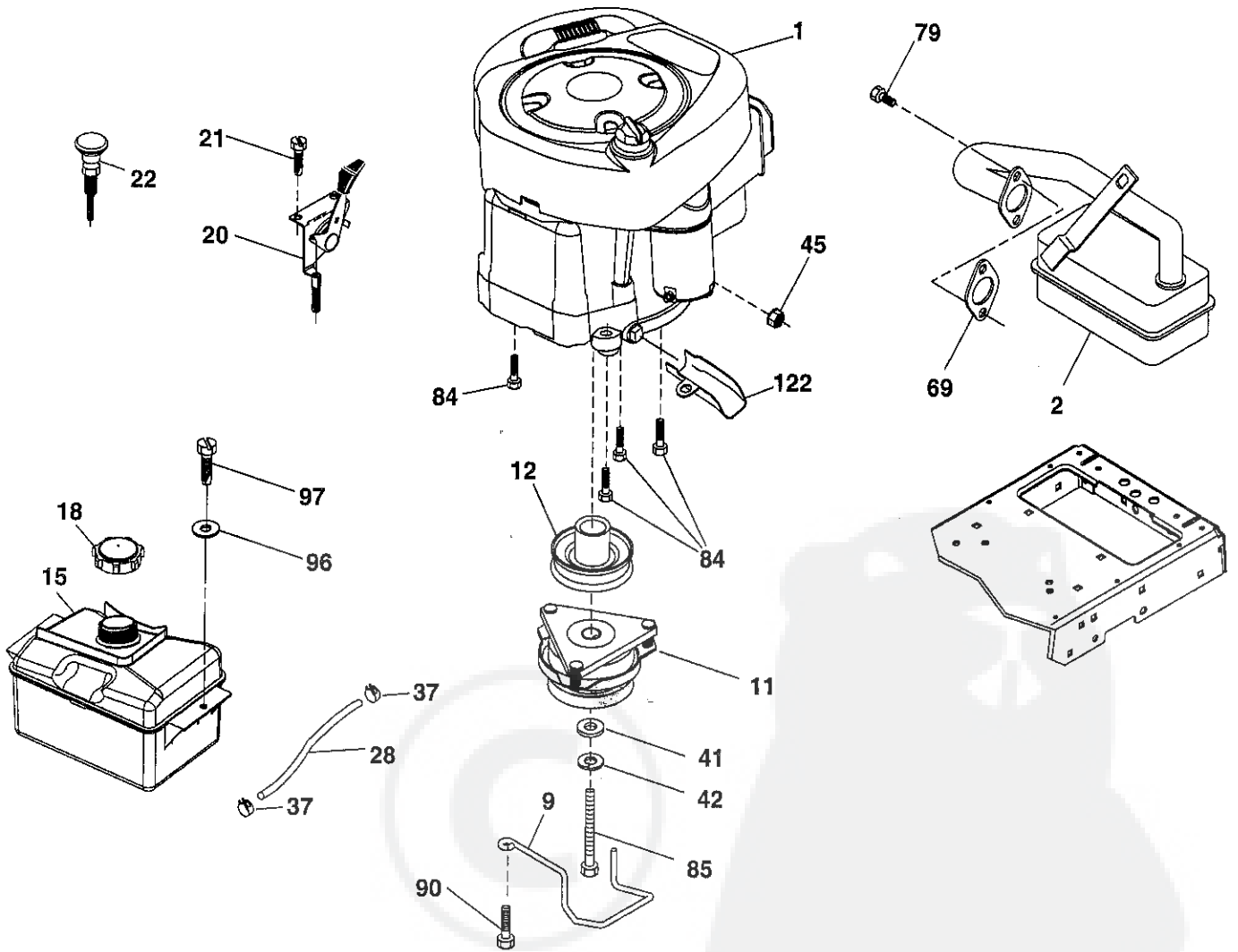
TRACTOR - - MODEL NUMBER 917.992311

GROUND DRIVE

| KEY NO. | PART NO. | DESCRIPTION | KEY NO. | PART NO. | DESCRIPTION |
|----------------|-----------------|--|----------------|-----------------|--------------------------------|
| 1 | ----- | Transaxle, T2-CDBE-5X1A-18C1 (581115601)(Order parts from transaxle manufacturer.) | 166 | 429164 | Nut Push .625 |
| 2 | 123583X | Key Square | 167 | 405257 | Latch Brake Parking |
| 15 | 19131316 | Washer 13/32 x 13/16 x 16 Ga. | 170 | 413430 | Keeper Belt Centerspan |
| 17 | 197296 | Spring, Brake | 174 | 197289 | Nut Push |
| 22 | 197660 | Rod Shift | 175 | 408539 | Shaft Asm Shift |
| 23 | 140845 | Knob | 176 | 196214 | Arm Clevis Rod Shift |
| 29 | 581506401 | Rod, Brake | 178 | 197456 | Spring Shift |
| 33 | 12000001 | Ring E | 183 | 156972 | Spacer Axle |
| 35 | 401031 | Rod, Brake, Park | 184 | 199996X667 | Handle Parking Brake |
| 37 | 121749X | Washer 25/32 x 1-1/4 x 16 | 185 | 72110622 | Bolt |
| 42 | 8883R | Cover, Foot Pedal | 186 | 194321 | Spacer Retainer |
| 49 | 72110614 | Bolt | 187 | 19133210 | Washer |
| 50 | 194327 | Pulley Idler Flat | 188 | 194323 | Link Clutch Ground Drive |
| 51 | 73900600 | Lock Nut 3/8-16 | 189 | 194317 | Bellcrank Ground Drive |
| 52 | 194326 | Idler V-Groove | 190 | 194318 | Keeper Bellcrank Ground Drive |
| 56 | 581270501 | V-Belt, Drive | 196 | 17000616 | Screw 3/8-16 x 1 |
| 64 | 196200 | Shaft Asm. Pedal Brake Control | 197 | 195804 | Link Clutch Anti-Rotation |
| 70 | 193220X428 | Console | 205 | 121748X | Washer 25/32 x 1-5/8 x 16 Ga. |
| 73 | 74490544 | Bolt Hex 5/16-18 x 2-1/2 G5 | 211 | 196212 | Bushing Shaft |
| 74 | 142432 | Screw 1/4 x 1/2 | 216 | 196131 | Bracket Pulley Idler |
| 80 | 581550701 | Strap Torque | 221 | 403187 | Retainer Spring Clip Handle |
| 99 | 408418 | Rod Spring Bypass | 231 | 407287 | Idler V-Groove |
| 114 | 73800500 | Nut Lock | 232 | 74780716 | Bolt 7/16-14 x 1 Gr 5 |
| 116 | 73900500 | Nut Lock Hex Flange 5/16-18 | 233 | 405296 | Washer Serrated |
| 121 | 175611 | Bracket Strap Torque | 263 | 17000612 | Screw hexwsh Thdr 3/8-16 x 3/4 |
| 122 | 72010520 | Bolt 5/16-18 x 2.50 | 268 | 182402 | Guard Muffler |
| 125 | 17000512 | Screw 5/16-18 x 3/4 | 275 | 19131614 | Washer 13/32 x 1 x 14 Ga. |
| 143 | 17490508 | Screw THDROL 5/16-18 | 279 | 424155 | Link Shift |
| 153 | 4497H | Retainer Spring 1" | | | |
| 159 | 76020412 | Pin Cotter 1/8 x 3/4 | | | |
| 160 | 169484 | Retainer Clip | | | |
| 161 | 105709X | Spring, Return, Clutch | | | |

NOTE: All component dimensions given in U.S. inches
1 inch = 25.4 mm

ENGINE



29

OPTIONAL EQUIPMENT

Spark Arrester

engine-tex_BS_49

TRACTOR - - MODEL NUMBER 917.992311

ENGINE

| KEY NO. | PART NO. | DESCRIPTION |
|---------|------------|--|
| 1 | - - - - | Engine B&S Model No. 31R977-00011-B1(585689201)(See engine breakdown.) |
| 2 | 137352 | Muffler |
| 9 | 584908001 | Keeper Belt Engine |
| 11 | 180505 | Clutch |
| 12 | 405097 | Pulley Engine |
| 15 | 581289901 | Tank Fuel 1.50 |
| 18 | 430220 | Cap Fuel |
| 20 | 176636X428 | Control Throttle/Choke |
| 21 | 416358 | Screw #10 x 0.750 |
| 22 | 187771X428 | Control Choke |
| 28 | 137040 | Fuel Line |
| 29 | 137180 | Spark Arrester Kit |
| 37 | 123487X | Clamp Hose |
| 41 | 126197X | Washer 1-1/2 x 15/32 x .250 |
| 42 | 10040700 | Washer Lock 7/16 |
| 45 | 73510400 | Nut Keps Hex 1/4-20 unc |
| 69 | 165291 | Gasket |
| 79 | 192334 | Screw Socket Hd 5/16-18 x .75 |
| 84 | 17060620 | Screw 3/8-16 x 1-1/4 |
| 85 | 173937 | Bolt Hex 7/16-20 x 4 x Gr. 5-1.5 |
| 90 | 17000616 | Screw 3/8-16 x 1.0 |
| 96 | 19091416 | Washer 9/32 x 7/8 x 16 Ga. |
| 97 | 17670412 | Screw 1/4-20 x 3/4 |
| 122 | 421922 | Extension Drain Oil |

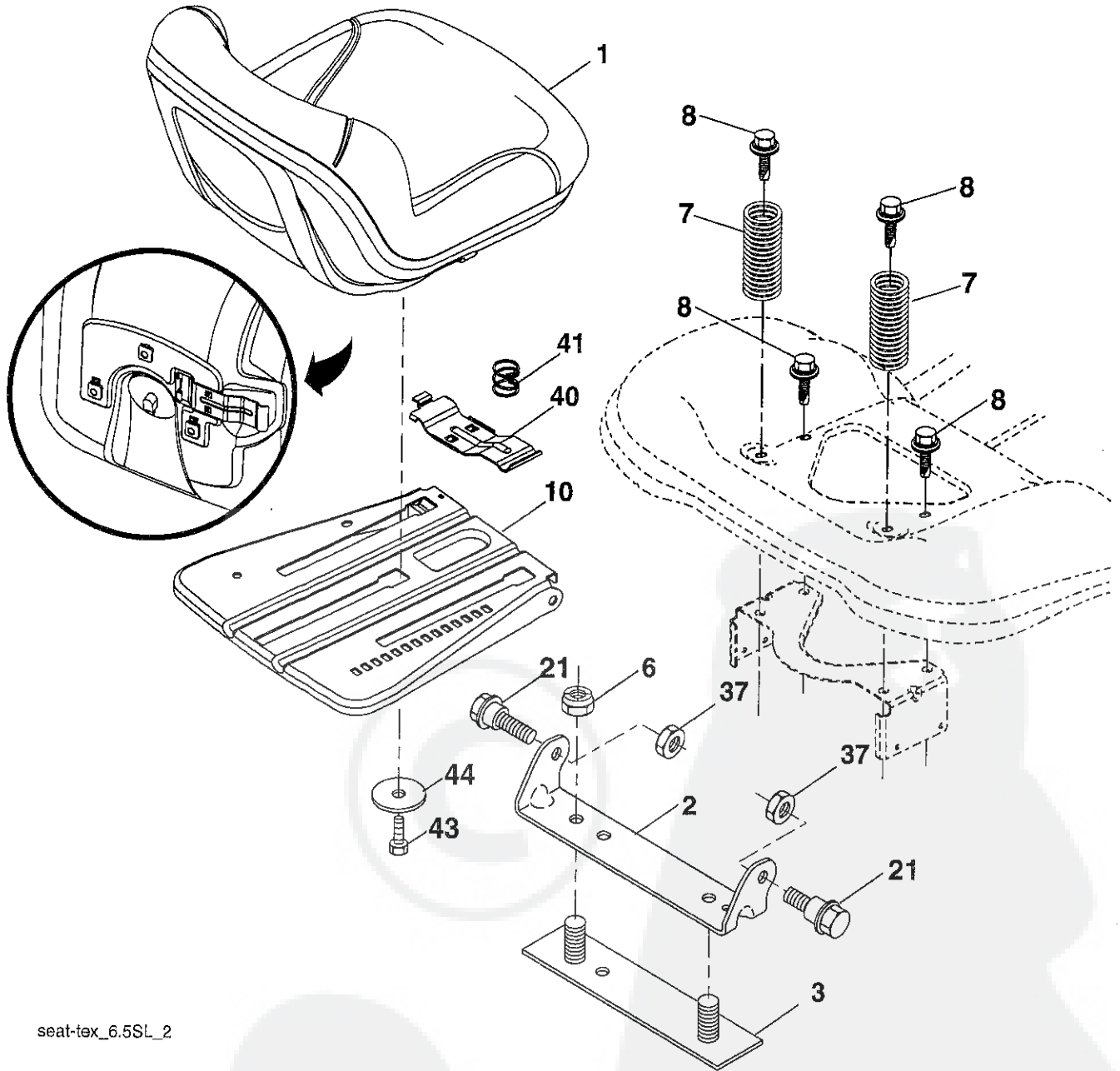
NOTE: All component dimensions given in U.S. inches
1 inch = 25.4 mm

Engine Power Rating Information

The gross power rating for individual gas engine models is labeled in accordance with SAE (Society of Automotive Engineers) code J1940 (Small Engine Power & Torque Rating Procedure), and rating performance has been obtained and corrected in accordance with SAE J1995 (Revision 2002-05). Torque values are derived at 3060 RPM; horsepower values are derived at 3600 RPM. Actual gross engine power will be lower and is affected by, among other things, ambient operating conditions and engine-to-engine variability. Given both the wide array of products on which engines are placed and the variety of environmental issues applicable to operating the equipment, the gas engine will not develop the rated gross power when used in a given piece of power equipment (actual "on-site" or net power). This difference is due to a variety of factors including, but not limited to, accessories (air cleaner, exhaust, charging, cooling, carburetor, fuel pump, etc.), application limitations, ambient operating conditions (temperature, humidity, altitude), and engine-to-engine variability. Due to manufacturing and capacity limitations, Briggs & Stratton may substitute an engine of higher rated power for this Series engine.

TRACTOR -- MODEL NUMBER 917.992311

SEAT ASSEMBLY



seat-tex_6.5SL_2

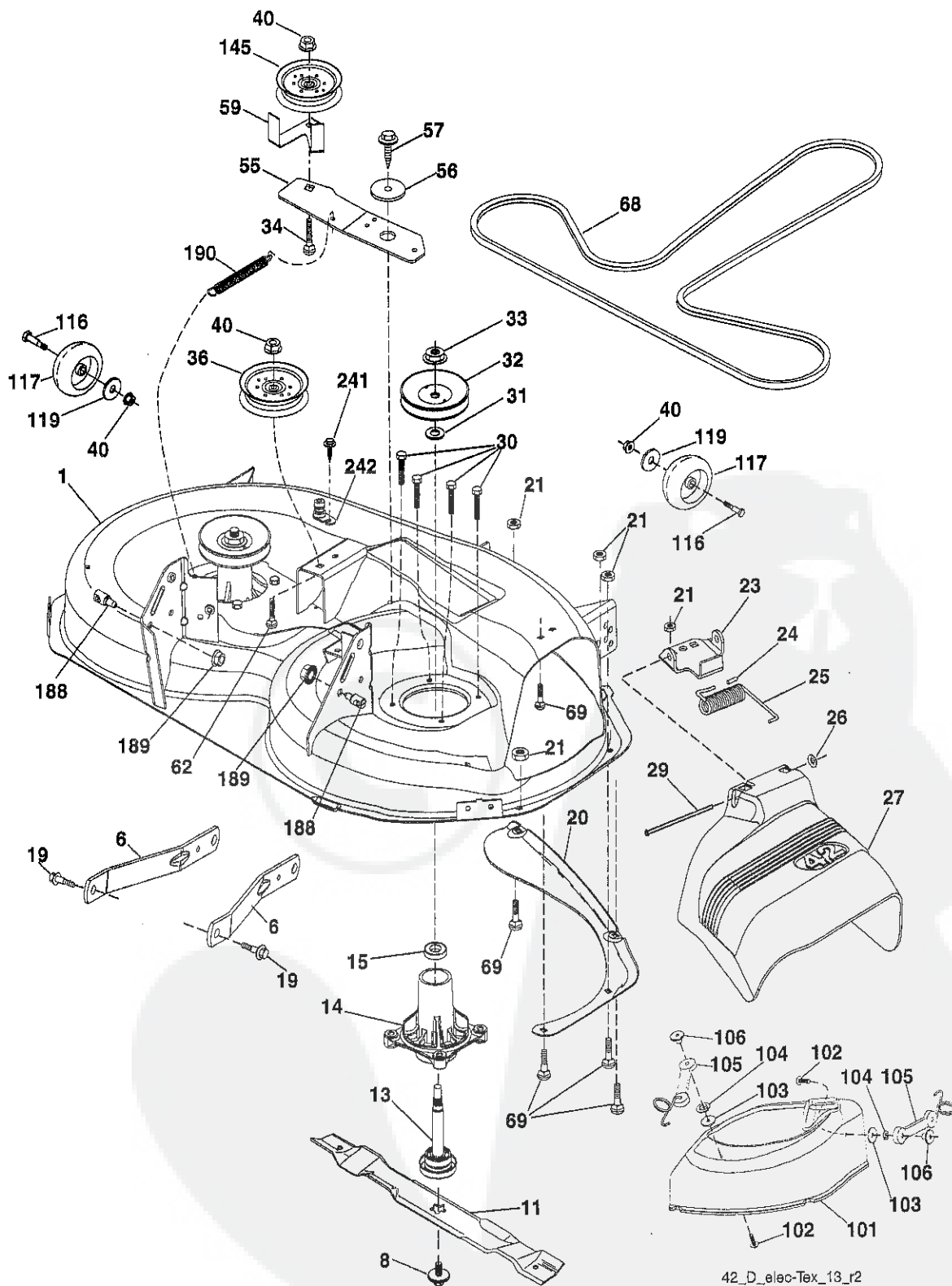
| KEY NO. | PART NO. | DESCRIPTION |
|---------|----------|-------------------------------|
| 1 | 423645 | Seat |
| 2 | 180166 | Bracket Pivot Fender |
| 3 | 140675 | Strap, Asm Fender |
| 6 | 73800600 | Nut, Lock w/Ins. 3/8-16 unc |
| 7 | 124181X | Spring, Seat Cprsn |
| 8 | 171877 | Bolt 5/16-18 unc x 3/4 w/Sems |
| 10 | 196977 | Pan, Seat |
| 21 | 171852 | Bolt, Shoulder 5/16-18 |
| 37 | 73800500 | Nut, Lock 5/16-18 unc |

| KEY NO. | PART NO. | DESCRIPTION |
|---------|----------|-------------------------------|
| 40 | 197661 | Handle Slide |
| 41 | 198200 | Spring Latch |
| 43 | 74760612 | Bolt 3/8-16 unc x 3/4 |
| 44 | 19133812 | Washer 13/32 x 2 3/8 x 12 Ga. |

NOTE: All component dimensions give in U.S. inches
1 inch = 25.4 mm

TRACTOR -- MODEL NUMBER 917.992311

MOWER DECK



42_D_elec-Tex_13_r2

TRACTOR - - MODEL NUMBER 917.992311

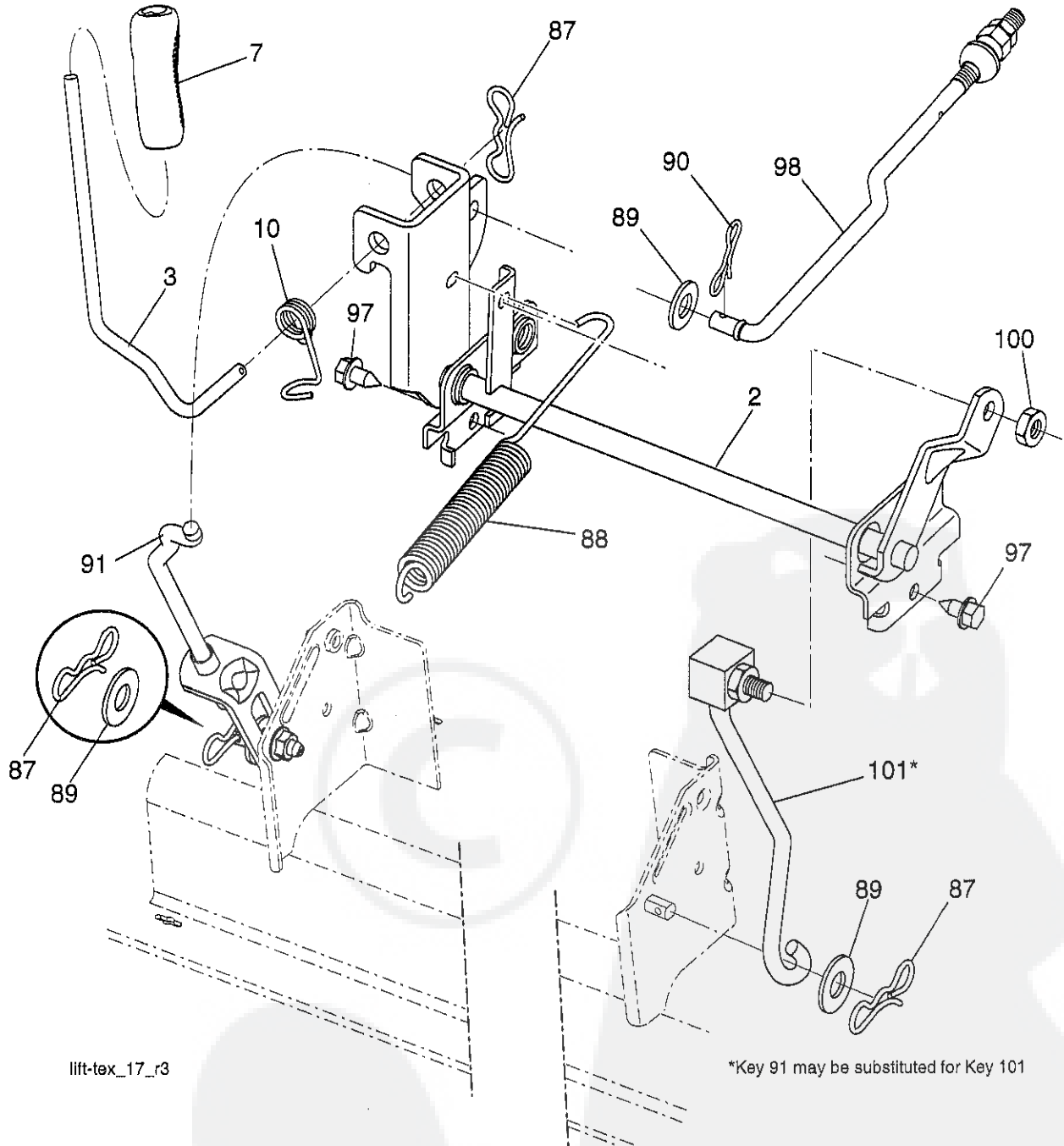
MOWER DECK

| KEY NO. | PART NO. | DESCRIPTION | KEY NO. | PART NO. | DESCRIPTION |
|----------------|-----------------|--|----------------|-----------------|---|
| 1 | 196495 | Mower Housing | 59 | 141043 | Guard, Tuv Idler (94) |
| 6 | 195186 | Arm Suspension | 62 | 72110616 | Bolt Rdhd Sqnk 3/8-16 unc x 2 |
| 8 | 193003 | Bolt/Washer Asm 7/16-20 unf | 68 | 144959 | V-Belt |
| 11 | 424752 | Blade 3 in 1 | 69 | 72140505 | Bolt Rdhd Sqnk 5/16-18 x 5/8 |
| -- | 422719 | Blade 3 in 1 Premium | 101 | 193107 | Cover Mulching |
| -- | 134149 | Blade Mulching Standard | 102 | 71081010 | Screw Pan Hd 10-24 x 5/8 |
| -- | 139775 | Blade Mulching Premium | 103 | 19061216 | Washer #10 |
| -- | 138971 | Blade, 42" Hi-Lift (For bagging or discharge) | 104 | 10071000 | Washer Lock #10 |
| 13 | 192872 | Shaft Assembly, Mandrel | 105 | 160793 | Latch Asm. |
| 14 | 187281 | Housing, Mandrel | 106 | 2029J | Nut Weld |
| 15 | 110485X | Bearing, Ball, Mandrel | 116 | 4898H | Bolt Shld. "A" 2.41 "B"1.66 |
| 19 | 196539 | Bolt, Shoulder | 117 | 188606 | Wheel Gage |
| 20 | 159770 | Baffle, Vortex | 119 | 19121414 | Washer 3/8 x 7/8 x 14 Ga. |
| 21 | 73680500 | Nut, Crownlock 5/16-18 unc | 145 | 193197 | Pulley, Idler, Flat |
| 23 | 192557 | Bracket, Deflector | 188 | 195161 | Stud Fastener |
| 24 | 105304X | Cap, Sleeve | 189 | 73900500 | Nut Lock Hex Flange |
| 25 | 197026 | Spring, Torsion, Deflector | 190 | 197251 | Spring Mower Drive |
| 26 | 110452X | Nut, Push | 241 | 152927 | Screw TT #10-32.5 3/8 Flange |
| 27 | 424469 | Shield, Deflector | 242 | 415598 | Port Washout |
| 29 | 131491 | Rod, Hinge | -- | 192870 | Mandrel Assembly (Includes housing (key# 14), shaft assembly (key# 13), bearing (key# 15) only - pulley/washer/nut and blade bolt/washers not included) |
| 30 | 173984 | Screw Thdrol Rolling Wsh Hd | -- | 586581501 | Replacement Mower, Complete |
| 31 | 187690 | Washer, Spacer | | | |
| 32 | 153535 | Pulley, Mandrel | | | |
| 33 | 400234 | Nut, Toplock, Flanged | | | |
| 34 | 72110612 | Bolt Carr Sh. 3/8-16 x 1-1/2 Gr. 5 | | | |
| 36 | 197379 | Pulley Idler | | | |
| 40 | 73900600 | Nut, Lock Fig. 3/8-16 unc | | | |
| 55 | 437110 | Arm, Idler | | | |
| 56 | 199092 | Spacer, Retainer | | | |
| 57 | 17000616 | Screw Hexwsh Thd 3/8-16 x 1 | | | |

NOTE: All component dimensions given in U.S. inches
1 inch = 25.4 mm

TRACTOR -- MODEL NUMBER 917.992311

LIFT ASSEMBLY



lift-tex_17_r3

*Key 91 may be substituted for Key 101

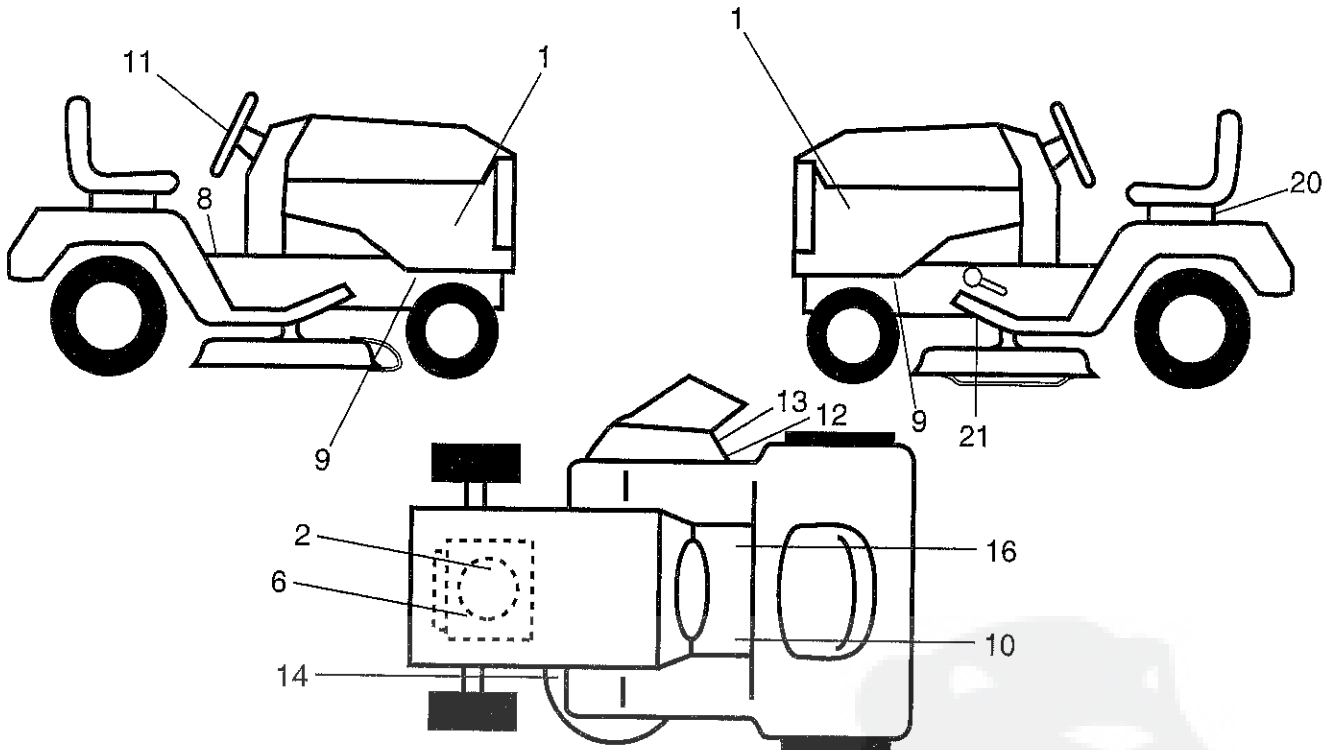
| KEY NO. | PART NO. | DESCRIPTION |
|---------|------------|------------------------------|
| 2 | 422027 | Shaft Asm., Lift |
| 3 | 195231 | Lever Asm., Lift RH |
| 7 | 445060X428 | Grip, Lever |
| 10 | 196314 | Spring Torsion |
| 87 | 194209 | Pin Cotter 7/16 Bow Tie Lock |
| 88 | 410710 | Spring Lift Assist |
| 89 | 19191912 | Washer Clear Zinc |
| 90 | 194208 | Pin Cotter 5/16 Bow Tie Lock |
| 91 | 197984 | Link Lift Susp Mower Rear |

| | | |
|-----|-----------|-----------------------------|
| 97 | 17000612 | Screw 3/8-16 x .75 |
| 98 | 581506901 | Link Lift Susp. Front Mower |
| 100 | 73930600 | Nut Centerlock 3/8-16 unc |
| 101 | 581506501 | Link Asm Lift Fixed |

NOTE: All component dimensions give in U.S. inches
1 inch = 25.4 mm

TRACTOR -- MODEL NUMBER 917.992311

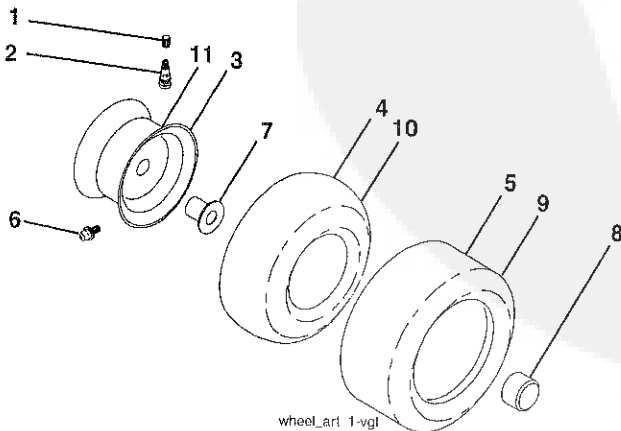
DECALS



| KEY NO. | PART NO. | DESCRIPTION |
|---------|-----------|----------------------------|
| 1 | 581744401 | Decal Side Panel Logo |
| 2 | 442546 | Decal Eng. H.P. |
| 6 | 581579701 | Decal Warning Engine |
| 8 | 581578101 | Decal Fender Warn |
| 9 | 581579601 | Decal Hot Muffler |
| 10 | 581724001 | Decal Brake/Clutch |
| 11 | 439525 | Decal Ins Strg Whl |
| 12 | 581579201 | Decal Warning |
| 13 | 581579101 | Decal Cutfinger CE |
| 14 | 581580001 | Decal V-Belt Schematic |
| 16 | 581578001 | Decal Saddle Brake Parking |
| 20 | 145005 | Decal Bat Dan/Psn |

| KEY NO. | PART NO. | DESCRIPTION |
|---------|------------|--------------------------|
| 21 | 421534 | Decal V-Belt Sch. |
| -- | 581724801 | Decal Bypass Fender |
| -- | 193226X428 | Pad Footrest LH |
| -- | 193227X428 | Pad Footrest RH |
| -- | 581724601 | Decal Drawbar Load Limit |
| -- | 586469640 | Manual Oper. (Euro) |
| -- | 586469650 | Manual Oper. (Scan) |
| -- | 586469620 | Manual Oper. (E-Bloc) |
| -- | 586469630 | Manual Oper. (Baltic) |
| -- | 586469626 | Manual Parts (English) |

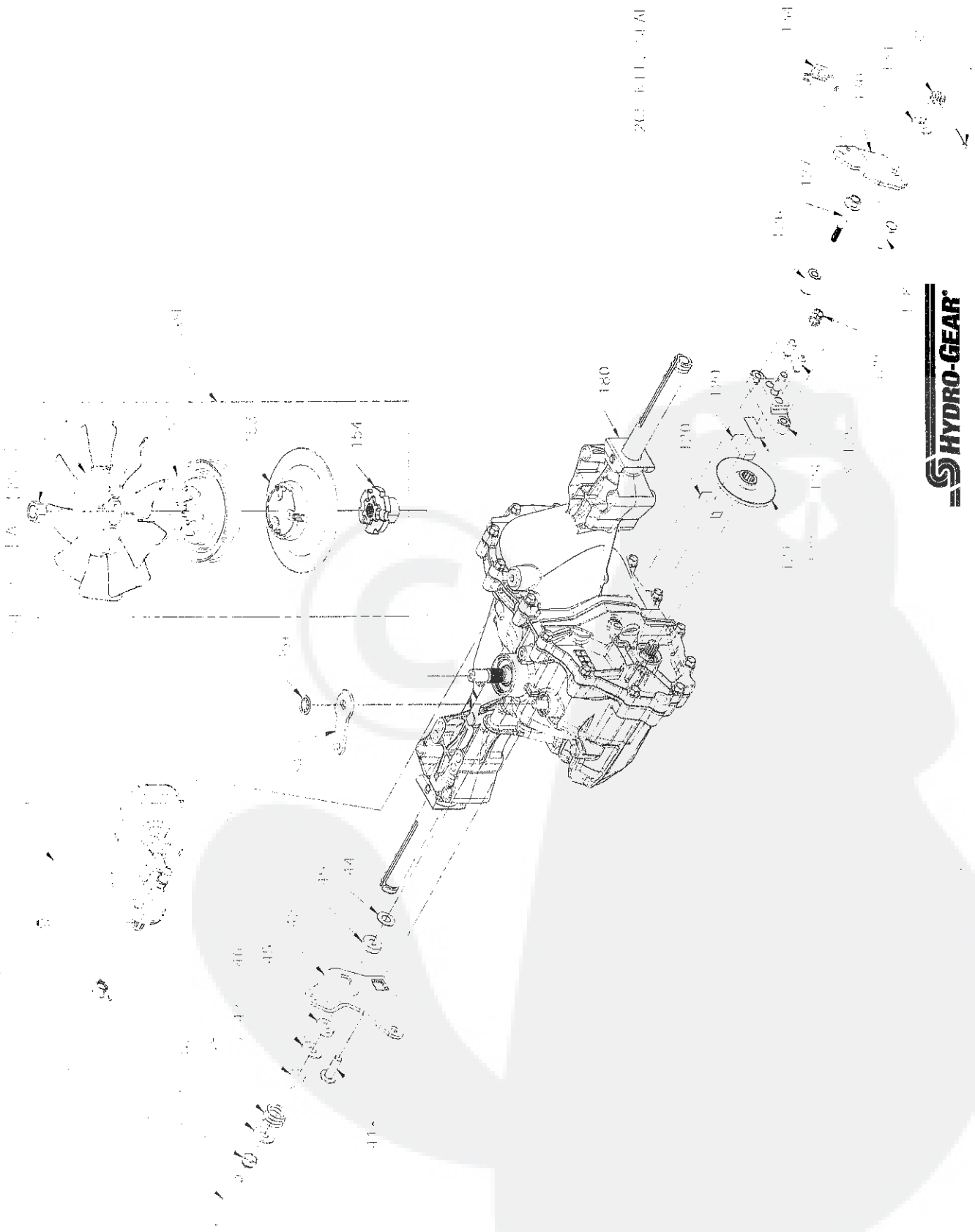
WHEELS & TIRES



| KEY NO. | PART NO. | DESCRIPTION |
|---------|------------|-----------------------------------|
| 1 | 59192 | Cap Valve Tire |
| 2 | 65139 | Stem Valve |
| 3 | 106732X613 | Rim Asm 6" Front |
| 4 | 59904 | Tube Front (Service Item Only) |
| 5 | 106222X | Tire Front 15 x 6-6 |
| 6 | 278H | Fitting Grease (Front Wheel Only) |
| 7 | 9040H | Bearing Flange (Front Wheel Only) |
| 8 | 104757X428 | Cap Axle Blk 1 50 x 1 00 |
| 9 | 138468 | Tire Rear 20 x 8-8 |
| 10 | 7152J | Tube Rear (Service Item Only) |
| 11 | 106108X613 | Rim Asm 8" Rear Service |
| -- | 144334 | Sealant, Tire (10 oz. Tube) |

NOTE: All component dimensions give in U.S. inches
1 inch = 25.4 mm

TRACTOR -- MODEL NUMBER 917.992311
HYDRO GEAR TRANSAXLE - MODEL NO. T2-CDBE-5X1A-18C1



TRACTOR - - MODEL NUMBER 917.992311
HYDRO GEAR TRANSAXLE - MODEL NO. T2-CDBE-5X1A-18C1

| KEY NO. | PART NO. | DESCRIPTION |
|----------------|-----------------|------------------------------|
| 34 | 584280701 | Arm Bypass |
| 35 | 584281001 | Ring, Ret .375 Ext |
| 41 | 584281201 | Screw 5/16-18X1 |
| 42 | 584289801 | Arm Control |
| 43 | 584281301 | Screw Set 5/16-24X2.50 |
| 44 | 584283301 | Washer Belleville |
| 45 | 584283101 | Washer Plastic.32X.80X.21 |
| 46 | 584283001 | Washer.34X.88X.06 |
| 47 | 584282801 | Spacer .32X.59X.50 |
| 48 | 584282701 | Spring Helical Comp |
| 49 | 584289501 | Nut,Hex 5/16-24 Nylon Insert |
| 120 | 584282601 | Puck.Brake |
| 121 | 584282501 | Rotor.Brake |
| 122 | 584289601 | Plate.Puck |
| 124 | 584289701 | Yoke.Brake |
| 125 | 584287501 | Pin.Brake.31X.73 Plated |
| 126 | 584282401 | Spacer.26X.57X.87 |
| 127 | 584281401 | Screw ¼-20X2.0 W/Patch |
| 128 | 584281501 | Screw ¼-20X1 Patch |
| 129 | 584282201 | Spring, Comp Brake Anti Drag |
| 130 | 584282301 | Arm.Brake |
| 131 | 584287401 | Washer .34X.88X.06 |
| 132 | 584281701 | Nut.Castle 5/16-24 Pl |
| 133 | 584286601 | Pin.Cotter 3/32X3/4 |
| 134 | 584281901 | Spring Brake Arm Bias |
| 150 | 584282001 | Fan 7", 10 Blade |
| 151 | 584286101 | Pulley 4.0 |
| 152 | 584282101 | Nut,Hex Ja ½-20 W Patch |
| 153 | 584287201 | Flange Pulley 4.895 |
| 154 | 584287301 | Hub Pulley |
| 180 | 584281601 | Spring,Clip Housing Thrust |
| 203 | 584285201 | Kit,E-Tank |
| 204 | 584285002 | Kit,Fan & Pulley |
| 205 | 584285001 | Kit, Seal |

NOTE: All component dimensions give in U.S. inches
1 inch = 25.4 mm

TRACTOR - - MODEL NUMBER 917.992311

BRIGGS & STRATTON ENGINE-MODEL NUMBER 31R977, TYPE NUMBER 0011-B1

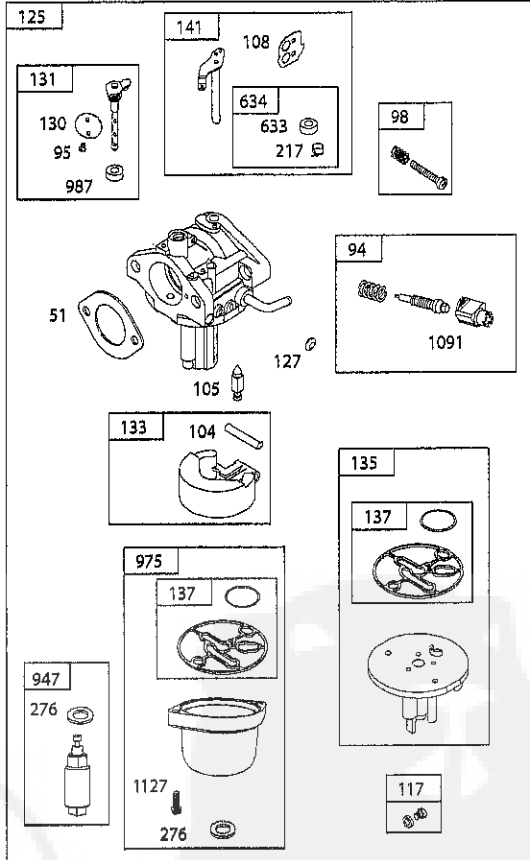
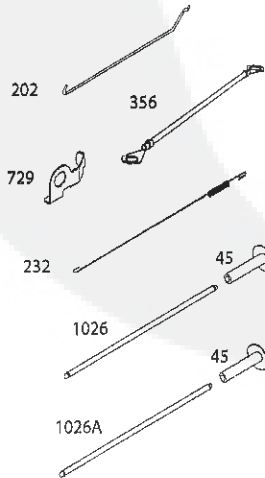
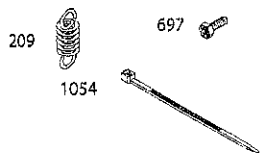
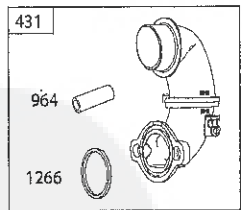
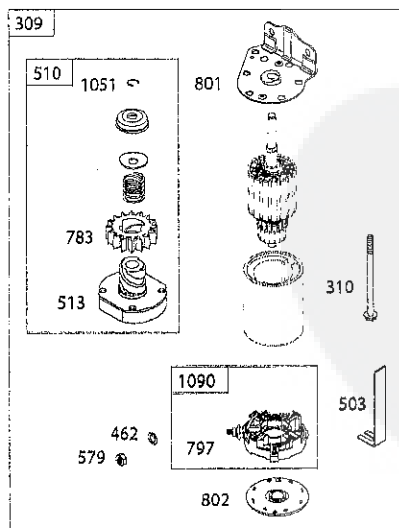
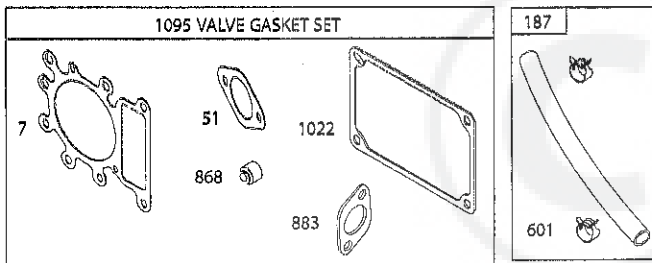
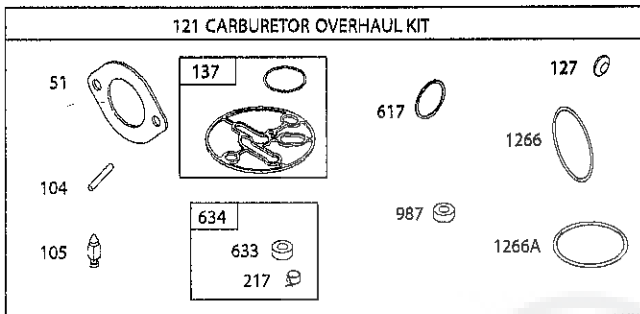
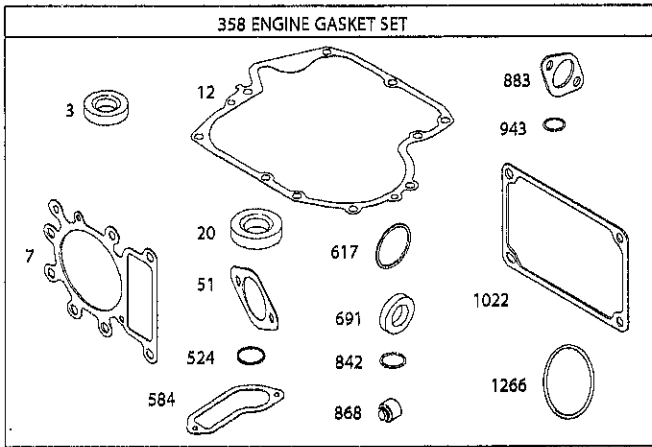
48 SHORT BLOCK

1036 EMISSIONS LABEL

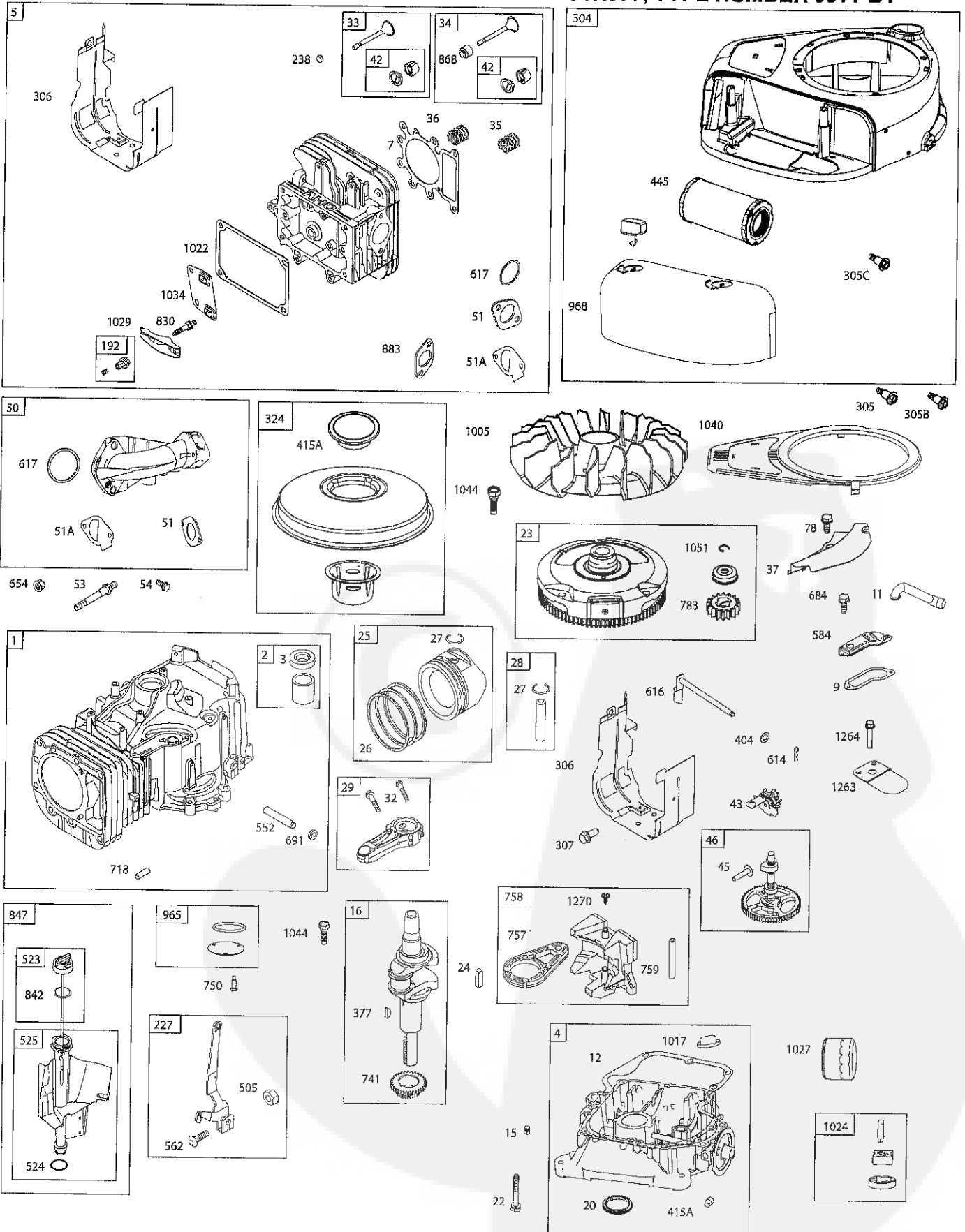
1058 OPERATOR'S MANUAL

1329 REPLACEMENT ENGINE

1330 REPAIR MANUAL



TRACTOR - - MODEL NUMBER 917.992311
BRIGGS & STRATTON ENGINE-MODEL NUMBER 31R977, TYPE NUMBER 0011-B1



TRACTOR - - MODEL NUMBER 917.992311
BRIGGS & STRATTON ENGINE-MODEL NUMBER 31R977, TYPE NUMBER 0011-B1

| KEY NO. | PART NO. | DESCRIPTION | KEY NO. | PART NO. | DESCRIPTION |
|---------|----------|--|---------|----------|---|
| 1 | 796010 | Cylinder Assembly | 133 | 694914 | Float-Carburetor |
| 2 | 797673 | Bushing/Seal Kit (Magneto Side) | 135 | 698780 | Tube-Fuel Transfer |
| 3 | 391086s | Seal-Oil (Magneto Side) | 137 | 698781 | Gasket-Float Bowl |
| 4 | 592849 | Sump-Engine | 141 | 592937 | Kit-Choke Shaft |
| 5 | 796026 | Head-Cylinder | 187 | 791766 | Line-Fuel (Cut to Required Length) |
| 7 | 796584 | Gasket-Cylinder Head | 188 | 691693 | Screw (Control Bracket) |
| 9 | 697109 | Gasket-Breather | 192 | 691986 | Adjuster-Rocker Arm |
| 11 | 794683 | Tube-Breather | 202 | 691841 | Link-Mechanical Governor |
| 12 | 697110 | Gasket-Crankcase | 209 | 796260 | Spring-Governor (Green) |
| 13 | 592244 | Screw (Cylinder Head) | 217 | 695409 | Spring-Choke Return |
| 15 | 690946 | Plug-Oil Drain | 222 | 694042 | Bracket-Control |
| 16 | 591763 | Crankshaft | 227 | 691374 | Lever-Governor Control |
| 20 | 795387 | Seal-Oil (PTO Side) | 232 | 691842 | Spring-Governor Link |
| 22 | 692125 | Screw (Crankcase Cover/Sump) | 238 | 691843 | Cap-Valve |
| 23 | 591758 | Flywheel | 240 | 394358s | Filter-Fuel |
| 24 | 591757 | Key-Flywheel (Steel) | 265 | 691024 | Clamp-Casing |
| 25 | 796172 | Piston Assembly (Standard) | 267 | 794904 | Screw (Casing Clamp) |
| | 796173 | Piston Assembly (.020" Over size) | 276 | 695410 | Washer-Sealing |
| 26 | 791936 | Ring Set (Standard) | 304 | 591642 | Blower Housing |
| | 792649 | Ring Set (.020" Oversize) | 305 | 697102 | Screw (Blower Housing) |
| 27 | 698469 | Lock-Piston Pin | 305B | 795891 | Screw (Blower Housing to Intake Elbow) (#10-16x.43) |
| 28 | 796007 | Pin-Piston | 305C | 799370 | Screw (Blower Housing) |
| 29 | 794571 | Rod-Connecting | | | (1/4-20x.90) |
| 32 | 791118 | Screw (Connecting Rod) | 306 | 592777 | Shield-Cylinder |
| 33 | 792868 | Valve-Exhaust | 307 | 691693 | Screw (Cylinder Shield) |
| 34 | 791935 | Valve-Intake | 309 | 693551 | Motor-Starter |
| 35 | 691279 | Spring-Valve (Intake) | 310 | 690323 | Screw (Starter Motor) |
| 36 | 691279 | Spring-Valve (Exhaust) | 324 | 796308 | Screen/Cup Assembly |
| 37 | 697352 | Guard-Flywheel | 356 | 697089 | Stop-Wire |
| 42 | 499586 | Keeper-Valve | 333 | 799650 | Armature-Magneto |
| 43 | 691968 | Slinger-Governor/Oil | 334 | 691061 | Screw (Magneto Armature) |
| 45 | 690564 | Tappet-Valve | 337 | 691043 | Plug-Spark |
| 46 | 793880 | Gear-Cam | 358 | 796187 | Gasket Set-Engine |
| 48 | N/A | Short Block (Not Available at This Printing) | 377 | 691639 | Key-Woodruff |
| 50 | 592842 | Manifold-Intake | 404 | 691691 | Washer (Governor Crank) |
| 51 | 692137 | Gasket-Intake | 415 | 794129 | Plug (Cover/Retainer) |
| 51A | 796081 | Gasket-Intake | 415A | 794903 | Plug |
| 53 | 591260 | Stud (Carburetor) | 431 | 797901 | Elbow-Intake |
| 54 | 691148 | Screw (Intake Manifold) | 445 | 591334 | Filter-Air Cleaner Cartridge |
| 78 | 691693 | Screw (Flywheel Guard) | 462 | 691261 | Washer (Starter Cable) |
| 94 | 793610 | Kit-Idle Mixture | 474 | 592829 | Alternator |
| 95 | 690718 | Screw (Throttle Valve) | 501 | 794360 | Regulator |
| 98 | 695408 | Kit-Idle Speed | 503 | 691532 | Strap-Starter |
| 104 | 694918 | Pin-Float Hinge | 505 | 691251 | Nut (Governor Control Lever) |
| 105 | 696136 | Valve-Float Needle | 510 | 693699 | Drive-Starter |
| 108 | 695419 | Valve-Choke | 513 | 692024 | Clutch-Drive |
| 117 | 699733 | Jet-Main (Standard) | 523 | 699908 | Dipstick |
| 118 | 843099 | Jet-Main (High Altitude) (5000/9000 Feet) | 524 | 691032 | Seal-Dipstick Tube |
| 121 | 796184 | Kit-Carburetor Overhaul | 525 | 697184 | Tube-Dipstick |
| 125 | 591734 | Carburetor | 526 | 697088 | Screw (Regulator) |
| 127 | 690727 | Plug-Welch | 552 | 697144 | Bushing-Governor Crank |
| 130 | 792747 | Valve-Throttle | 559 | 693675 | Screw (Remote Choke Stop) |
| 131 | 792765 | Kit-Throttle Shaft | | | (6 Lobe) |

LIMITED WARRANTY ON CRAFTSMAN RIDING EQUIPMENT

For two (2) years from the date of purchase, if this Craftsman Riding Equipment is maintained, lubricated and tuned up according to the instructions in the owner's manual, Sears will repair or replace free of charge any parts that are found to be defective in material or workmanship according to the guidelines of coverage listed below. Sears will also provide free labor for these applicable warranted parts for the two full years. During the first 30 days of purchase, there will be no charges to service the product at your home for issues covered by this warranty. (See exclusions below). For your convenience, IN HOME warranty service will still be available after the first 30 days of purchase, but a trip charge will apply. This charge will be waived if the Craftsman product is dropped off at an authorized Sears location. For the nearest authorized Sears location, please call 1-800-4-MY-HOME®. This warranty applies only while this product is within the United States.

This Warranty does not cover:

- Expendable items which become worn during normal use, including but not limited to blades, spark plugs, air cleaners, belts, and oil filters.
- Standard Maintenance Servicing, oil changes, or tune-ups
- Tire replacement or repair caused by punctures from outside objects, such as nails, thorns, stumps, or glass.
- Repairs necessary because of operator abuse, including but not limited to, damage caused by towing objects beyond the capability of the riding equipment, impacting objects that bend the frame or crankshaft, or over-speeding the engine.
- Repairs necessary because of operator negligence, including but not limited to, electrical and mechanical damage caused by improper storage, failure to use the proper grade and amount of engine oil, failure to keep the deck clear of flammable debris, or failure to maintain the equipment according to the instructions contained in the owner's manual.
- Engine (fuel system) cleaning or repairs caused by fuel determined to be contaminated or oxidized (stale). In general, fuel should be used within 30 days of its purchase date.
- Normal deterioration and wear of the exterior finishes, or product label replacement.
- Riding equipment used for commercial or rental purposes.

LIMITED WARRANTY ON BATTERY

For ninety (90) days from date of purchase, if any battery included with this riding equipment proves defective in material or workmanship and our testing determines the battery will not hold a charge, Sears will replace the battery at no charge. During the first 30 days of purchase, there will be no charges to replace the battery at your HOME. After the first 30 days, for your convenience, IN-HOME warranty service will still be available but a trip charge will apply. This charge will be waived if the Craftsman product is dropped off at an authorized Sears location. For the nearest authorized Sears location, please call 1-800-4-MY-HOME®.

This battery warranty applies only while this product is within the United States.

This warranty gives you specific legal rights, and you may also have other rights, which vary, from state to state.

Sears Brands Management Corporation, Dept.817WA, Hoffman Estates, IL 60179

CRAFTSMAN®