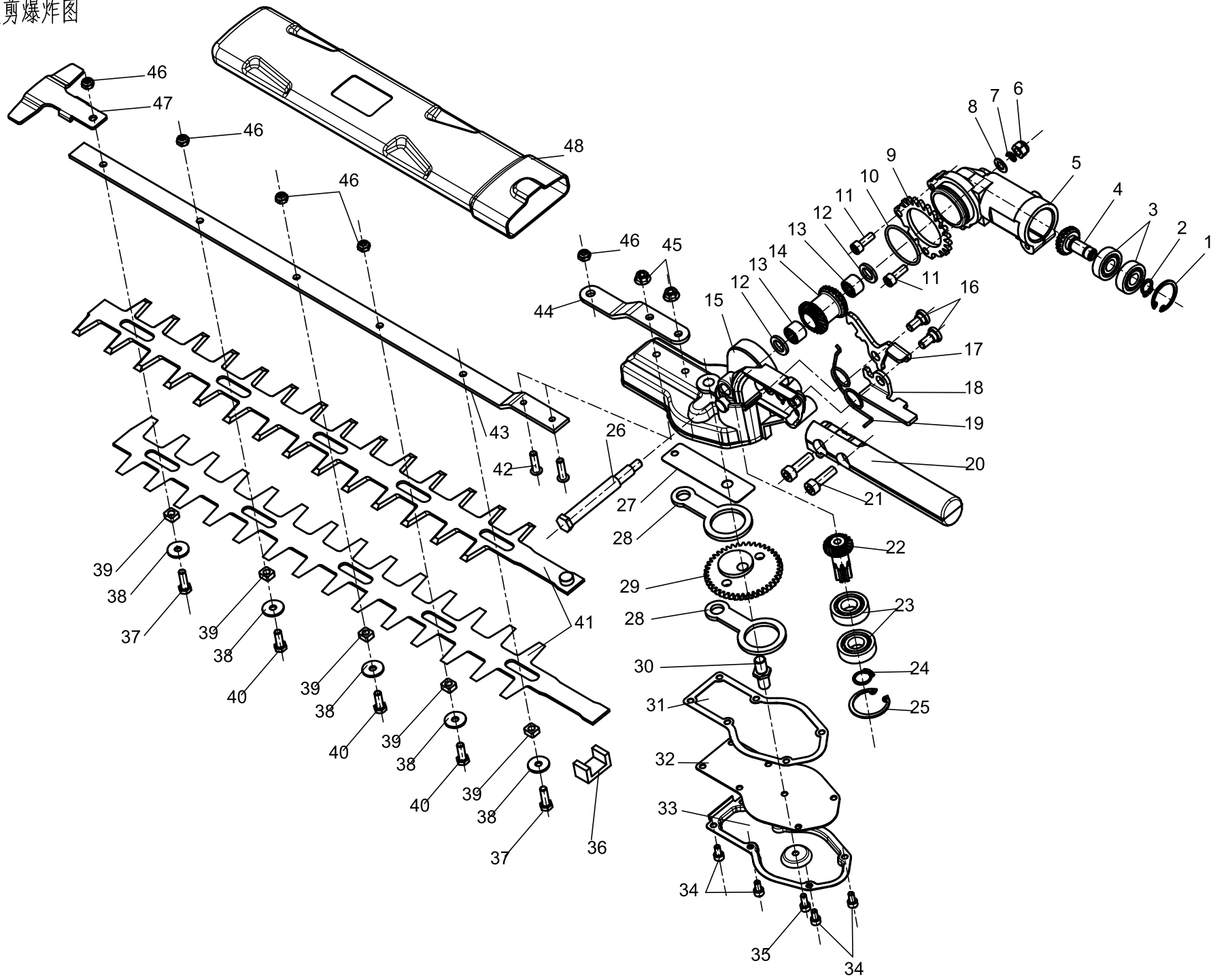


4.30高枝剪爆炸图



DY430 high branch shear explosion diagram details

page 1/2

NO	Part num	Description(Cn)	Description(En)	Quantity
1		孔用弹性挡圈24	Hole with a flexible ring 24	1
2		轴用弹性挡圈10	Shaft with elastic ring 10	1
3		轴承609-2RS	Bearing 609-2RS	2
4		主动齿轮	Active gear	2
5		高枝剪小箱体	High branch cut small box	1
6		六角防松螺母M6	Hexagon lock nut M6	1
7		ø6弹性垫片	ø 6 elastic gasket	1
8		平垫片6.5×12×0.8	Flat washer 6.5 × 12 × 0.6	1
9		定位棘轮	Positioning ratchet	1
10		O型圈	O-ring	1
11		内六角螺钉M5×14	Hexagon Socket Screws M5 × 14	2
12		耐磨垫10×16×2	Wearable gasket 10 × 16 × 2	2
13		滚针轴承HK1014 10	Needle roller bearings HK1014 10	2
14		中导齿轮	Medium gear	1
15		高枝剪大箱体	High branch cut large box body 1	1
16		内六角台阶螺钉	The shoulder screw M6X14	2
17		定位扳机	Positioning the trigger	1
18		保险扳机	Insurance trigger	1
19		扳机扭簧	Trigger torsion spring	1
20		高枝剪手柄	handle	1
21		内六角螺钉M6×20	Hexagon Socket Screws M6x20	2
22		被动齿轮	Passive gears	1
23		轴承6001-2RS	Bearing 6001-2RS	2
24		轴用弹性挡圈12	Shaft with elastic ring 12	1
25		孔用弹性挡圈28	Hole with elastic ring 28	1
26		长轴	Long axis	1
27		减磨片小	Less wear plate	1
28		连杆	link	2
29		凸轮齿	Cam teeth	1
30		短轴	Short axis	1
31		密封纸垫	Sealed paper mats	1
32		减磨片大	Reduction of large pieces	1
33		后盖	Back cover	1
34		内六角螺M4×8	Hexagon screw M4 × 8	6
35		内六角螺M4×10	Hexagon screw M4 × 10	1
36		羊毛毡	Wool felt	1
37		外六角螺钉M5×16	Hexagon screw M5 × 16	2
38		平垫片5×16×1.5	Flat washer 5 × 16 × 1.5	5

DY430 high branch shear explosion diagram details

page 2/2

NO	Part num	Description(Cn)	Description(En)	Quantity
39		刀片隔套	Blade spacer	5
40		外六角螺钉M5×14	Hexagon screw M5 × 14	3
41		刀片	blade	1
42		十字盘头螺钉M5×18	Cross head screws M5 × 18	2
43		刀片压条	Blade bar	1
44		锁紧条	Locking bar	1
45		六角法兰螺母M5	Hexagon flange nut M5	2
46		六角防松螺母M5	Hexagon lock nut M5	5
47		固定板支架	Fixed plate bracket	1
48		刀片护套	Blade jacket	1