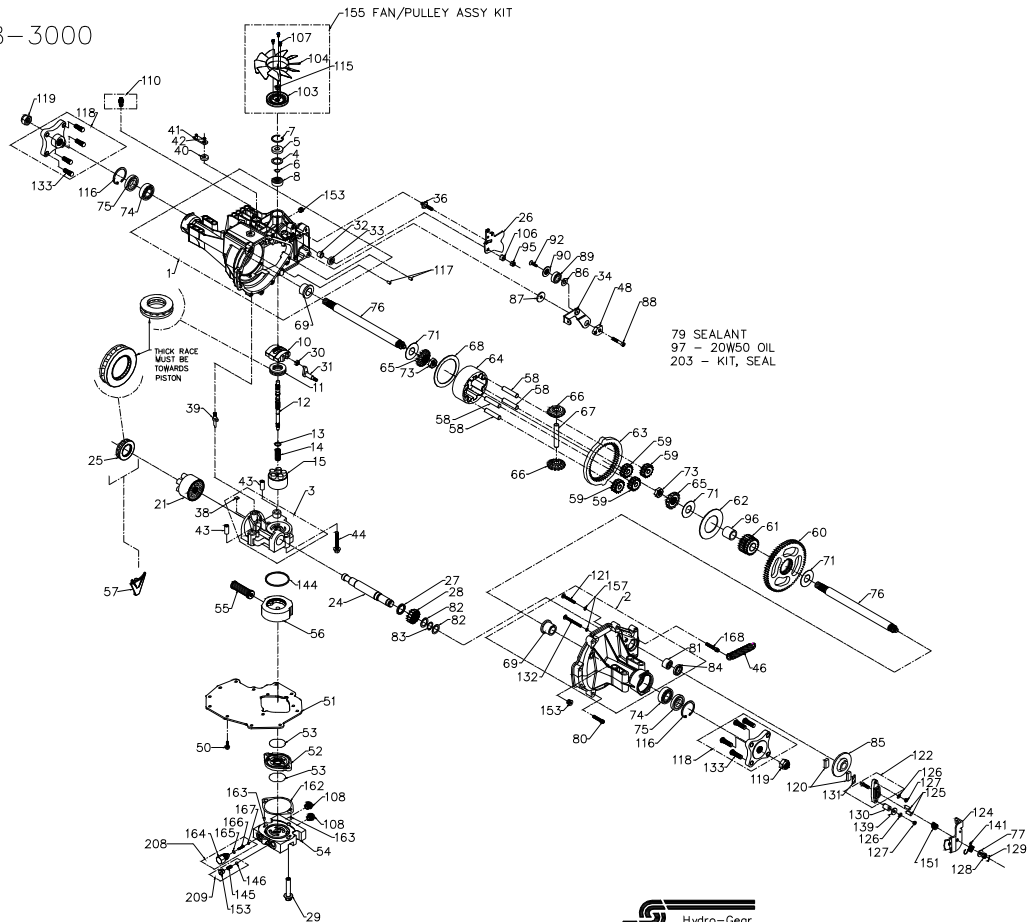


328-3000



328-3000

ITEM #	PART #	QTY	DESCRIPTION
1	70433	1	HOUSING, MAIN ASSEMBLY
		1	HOUSING, MAIN
		1	SEAL, LIP 12x25x7
		1	BEARING, FLANGE
		1	BUSHING, TRUNNION
2	70298	2	BEARING, CRADLE
		1	HOUSING, R.H. ASSEMBLY
3	70686	1	HOUSING, R.H.
		1	BEARING, FLANGE
		2	O-RING .07X.239
		1	BOLT, 2" RIB NECK
		1	BEARING, NEEDLE .875X1.125X.75
		1	SEAL, LIP .875X1.3X.25
		1	KIT, CENTER SECTION
		1	CENTER SECTION
		1	BUSHING .50X.60X.50
		1	BUSHING .90X1.02X.75
		1	PLATE, BYPASS
		1	CHECK PLUG ASSEMBLY, NO BLEED
		1	CHECK PLUG ASSEMBLY, .027
		1	SPACER
		1	SEAL, LIP 15X35X7
4	2003018	1	RING, WIRE RETAINING
	9008000-0128	1	RING, RETAINING
	2003016	1	RING, RETAINING
	2003052	7	BEARING, BALL
	2003043	1	SWASHPLATE, VARIABLE
	7003087	1	BEARING, THRUST 30X52X13
	50551	1	SHAFT, INPUT
	50960	1	WASHER, BLOCK THRUST
	2003017	1	SPRING, BLOCK
	2003014	1	BLOCK, 10cc CYLINDER ASSEMBLY
	70331	1	BLOCK, 10cc CYLINDER
		5	PISTON, 10cc
		5	SPRING, 10cc PISTON
		5	WASHER, PISTON SEAT
	21	70082	1
		1	BLOCK, 21cc CYLINDER
		7	WASHER, PISTON SEAT
		1	PISTON, 21cc
		7	SPRING, 21cc PISTON
		1	SHAFT, MOTOR
		1	BEARING, THRUST 42X68X16
		1	ARM, CONTROL
		1	SPACER
		1	GEAR, 16T PINION
		4	SCREW, HEX FLANGE M8X1.25X40
		30	GUIDE, SLOT
		31	ARM, TRUNNION
		32	BUSHING, TRUNNION
		33	SEAL, LIP 12X25X7
	34	ARM, RETURN	
	36	STUD 5/16-24	
	38	KIT, BYPASS PLATE	
	39	ACTUATOR, BYPASS	

ITEM #	PART #	QTY	DESCRIPTION
40	45074	1	SCREW/LIP 1/4X22X75
41	50270	1	ARM, BYPASS
42	44870	1	RING, RETAINING
43	50002	2	PIN
44	50016	3	SCREW 3/8-24X2.5
46	51199	1	SPRING, RETURN
48	51097	1	PUCK, ADJUSTING
50	50752	14	COVER, LOWER
51	51302	1	HOUSING, GEROTOR ASSEMBLY
52	51049	2	O-RING .103X2.425
53	9004100-1430	1	KIT, MANIFOLD, AUXILIARY
54	70545	1	MANIFOLD, AUXILIARY
		1	BUSHING .394X.472X.394
55	51308	1	MANIFOLD, CHARGE
56	51303	1	RETAINER, MOTOR BEARING
57	50796	4	PIN, CARRIER
58	50776	4	GEAR, 15T PLANET
59	50763	1	GEAR, 6T7 SPUR
60	50646	1	GEAR, 21 TOOTH SUN
61	50645	1	PLATE, PLANET THRUST
62	50769	1	GEAR, 51T RING
63	50764	1	CARRIER, PLANETARY
64	50765	2	GEAR, MITER DIFF. (SPINED)
65	50647	2	CHECK, MITER DIFF.
66	50648	1	SHAFT, DIFFERENTIAL
67	50766	1	PLATE, THRUST DIFF.
68	50767	2	BEARING, FLANGE
69	50768	2	WASHER 1.0X2.25X.04
70	50788	3	NUT, HEX JAM 5/8-18
71	50791	2	BEARING, BALL 25.4X52X15
72	50771	2	SEAL 1X2.049X.375
73	50772	2	SHAFT, AXLE
74	50773	1	WASHER .34X.88X.06
75	44130	1	WASHER .51X.0X.03
76	50825	1	WASHER .32X2.0X.14
77	44130	1	SCREW, 5/16-24X1-1/2
78	50928	1	BEARING, 625X1.375X.433
79	50868	8	SPACER, LOCATING
80	50868	1	SCREW, COUNTERSUNK 5/16-18X1
81	44752	1	NUT, HEX LOCK 5/16-24
82	50777	2	BEARING, SLEEVE 1.0X1.31X1.34
83	50775	1	OIL-20W50
84	50773	1	PULLEY
85	50779	1	FAN
86	50132	1	SPACER, TRUNNION
87	50836	1	SCREW 12-24X.5
88	50837	1	PLUG, PLASTIC
89	44147	1	KIT, FITTING
90	51200	1	O-RING .08X.468
91	51200	1	FITTING, PLASTIC HOSE
92	50870	1	NUT, HEX 1/2-20
93	50108	2	RING, RETAINING
94	50866	2	PIN, STD HDLS
95	50108	2	
96	50866	2	
97	51242	122	
103	51242	1	
104	50848	1	
106	50850	1	
107	50851	3	
108	9005200-5600	2	
110	70110	2	
115	44133	1	
116	50859	2	
117	9004800-2506	2	

ITEM #	PART #	QTY	DESCRIPTION
118	70314	4	HUB ASSEMBLY
		2	STUD, 1/2-20X1.5
		1	HUB
119	50863	2	NUT, HEX 3/4-16
120	44132	2	PUCK, BRAKE
121	50874	1	BOLT, 2" RIB NECK
122	70633	1	YOKE, BRAKE ASSEMBLY
124	50916	1	ARM, BRAKE
125	44127	2	PIN, BRAKE
126	43177	2	LOCKWASHER, 1/4"
127	43178	2	NUT, 1/4-20
128	44142	1	NUT, CASTLE
129	44101	1	PIN, COTTER
130	23711	1	SPACER
131	44134	1	PLATE, PUCK
132	50865	1	BOLT, 3" RIB NECK BOLT
133	44431	8	STUD, 1/2-20X1.5
139	44278	1	WASHER, 27X.88X.12
141	50884	1	SPRING, BRAKE ARM BIAS
144	50974	1	O-RING .103X2.987
145	51157	1	SPRING, RELIEF
146	9001214-4400	1	BALL, 7/16
151	50919	1	SPRING, COMP. BRAKE ANTI-DRAW
153	9005110-5600	3	PLUG, STRAIGHT THREAD
155	70489	1	KIT, FAN/PULLEY ASSEMBLY
		1	PULLEY
		1	FAN
		3	SCREW 12-24X.5
		1	NUT, HEX 1/2-20
		2	O-RING .070X.239
157	50977	1	SHIM
162	51148	1	SHIM
163	50408	2	PIN
164	50967	1	VALVE BODY
165	9004201-3700	1	O-RING .078X.468
166	50968	1	SPRING
167	9001214-2500	1	1/4" BALL
168	51151	1	SCREW, SHOULDERS TORX HEAD 5/16-18X1.81
203	70492	1	KIT, SEAL
		1	SEAL, LIP 15X35X7
		1	SEAL, LIP 12X25X7
		1	SEAL, LIP 10X25X7
		2	O-RING .103X2.425
		2	SEAL, LIP 1.000X2.049X.375
		1	SEAL, LIP .875X1.375X.250
		2	O-RING .070X.239
		1	KIT, O-RING, MANIFOLD
		1	SHIM, CHARGE PUMP (.002 RED)
208	2510082	1	KIT, VALVE, AUXILIARY RELIEF
		1	VALVE, AUXILIARY RELIEF BODY
		1	O-RING .078X.468
		1	SPRING, AUXILIARY RELIEF
		1	1/4" BALL
209	70544	1	KIT, CHARGE RELIEF
		1	PLUG, STRAIGHT THREAD
		1	SPRING, RELIEF
		1	BALL, 7/16