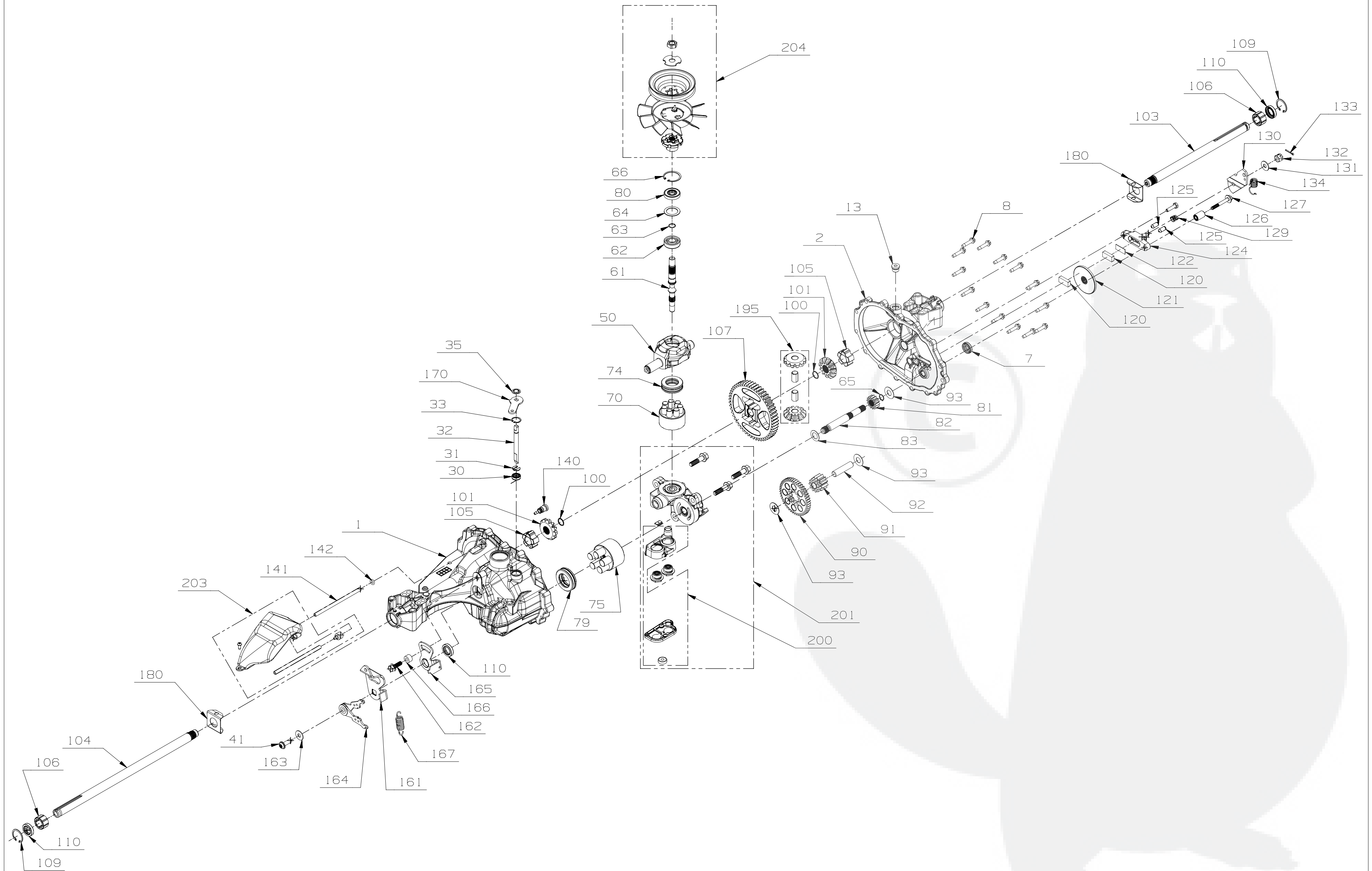


T2-BEBE-3X3C-14X1



T2-BEBE-3X3C-14X1

ITEM	PART #	QTY	DESCRIPTION
1	71546	1	KIT, MAIN HOUSING
2	71547	1	KIT, SIDE HOUSING
7	52820	1	SEAL, LIP .50 X 1.00 X .25 TC
8	53246	14	SCREW, HEX WASHER
10	50928	1	TUBE, SEALANT
13	9005110-5600	1	PLUG, 9/16-18 STR THREAD SOCKET HEAD
30	51626	1	SEAL, LIP .375 X .75 X .25
31	51628	1	RING, RETAINING EXTERNAL .375
32	52459	1	ROD, BYPASS
33	51627	1	RING, RETAINING .750, INTERNAL
35	51630	1	RING, RETAINING .375 EXTERNAL
41	51812	1	TWHCS 5/16-24 x 1.00
50	52450	1	SWASHPLATE, TRUNNION MACHINE
61	52462	1	SHAFT, INPUT
62	2003043	1	BEARING, BALL .59 X 1.38 X .43
63	2003016	1	RING-RETAINING
64	2003018	1	WASHER, .98 X 1.37 X .04, FLAT
65	44354	1	RING, RETAINING .457 EXT
66	2003052	1	RING, RETAINING 1.375 INTERNAL
70	72228	1	KIT, BLOCK, 7 PISTON, 8cc
74	52465	1	BEARING, THRUST 28 X 47 X 14
75	70331	1	KIT, BLOCK 10cc CYLINDER
79	50551	1	BEARING, THRUST 30 x 52 x 13
80	9008000-0128	1	SEAL, LIP 15 X 35 X 7 PTC
81	52484	1	GEAR, 14T
82	52467	1	SHAFT, MOTOR
83	52468	1	WASHER, .60 X 1.00 X .03 FLAT
90	52483	1	GEAR, 47T/11T
91	52470	1	GEAR, 11T
92	52471	1	PIN, JACKSHAFT
93	50132	3	WASHER, .51 X 1.00 X .03 FLAT
100	44871	2	RING, SPIRAL
101	51769	2	GEAR, MITER 12T
103	51354	1	SHAFT, AXLE .75 X 12.14 (KEYED, RH)
104	51067	1	SHAFT, AXLE .75 X 16.99 (KEY, LH)
105	52280	2	BUSHING, AXLE INBOARD

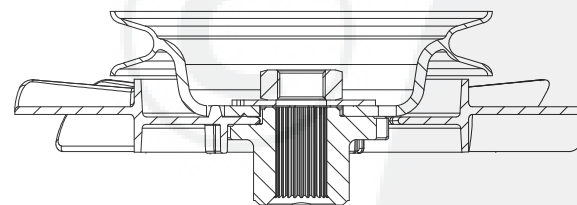
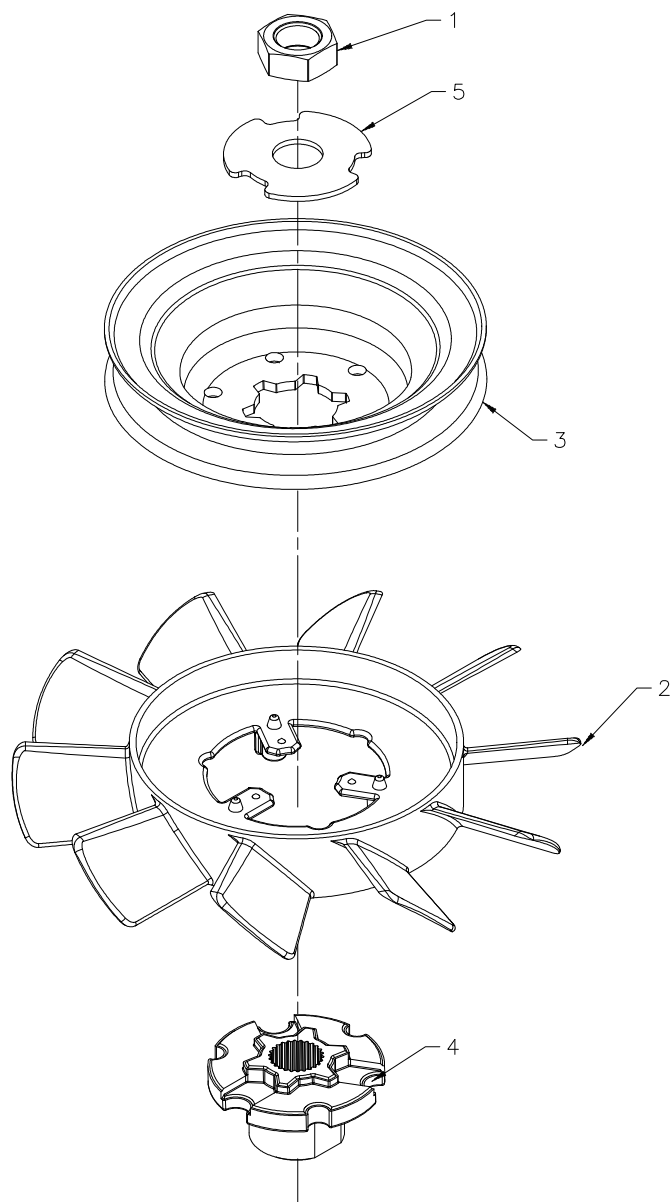
ITEM	PART #	QTY	DESCRIPTION
106	52278	2	BUSHING, AXLE OUTBOARD
107	52472	1	GEAR, 53T
109	52275	2	RING, RETAINING 1.25 INTERNAL
110	53901	3	SEAL, LIP .75 X 1.125 X .25
120	44132	2	PUCK, BRAKE
121	52473	1	ROTOR, BRAKE
122	44134	1	PUCK, PLATE
124	62589	1	KIT, BRAKE YOKE
125	44127	2	PIN, BRAKE ACTUATING
126	23711	1	SPACER
127	51146	1	SCREW .250-20 X 2.0 HFS PATCH
128	44433	1	BOLT, 1/4-20 X 1 (PATCH)
129	50919	1	SPRING COMPRESSION BRAKE ANTI-DRAG
130	44094	1	ARM, BRAKE
131	44130	1	WASHER FLAT.34 X .88 X .06
132	44142	1	NUT, CASTLE 5/16-24
133	44101	1	PIN, COTTER 3/32 X 3/4
134	50884	1	SPRING, BRAKE ARM BIAS
140	51143	1	FITTING, 5/16 SAE 5/32 TUBE
141	52474	1	TUBE .16 X .28 X 5.5
142	51144	1	O-RING, .103 X .299 ID
161	52478	1	ARM, CONTROL RTN
162	51064	1	BOLT, HEX FLANGE, 5/16-24 x .94
163	44130	1	WASHER FLAT.34 X .88 X .06
164	52611	1	ASSEMBLY, BI-DIRECTIONAL RTN
165	52618	1	ASSEMBLY, NEUTRAL ARM
166	52481	1	BUSHING, .315 x .618 x .390
167	52401	1	SPRING, EXTENSION
170	52460	1	ARM, BYPASS
180	53319	2	SPRING CLIP, HOUSING THRUST
195	72314	1	KIT, MITER-GEARS & PINS
200	71553	1	KIT, FILTER
201	72500	1	KIT, CENTERSECTION WITH FILTER
203	71549	1	KIT, EXPANSION TANK
204	72136	1	KIT, FAN PULLEY
205	71554	1	KIT, SEAL



NOTICE - THIS DRAWING CONTAINS HYDRO-GEAR PROPRIETARY INFORMATION. NEITHER RECEIPT NOR POSSESSION THEREOF CONFERS ANY RIGHT TO REPRODUCE, USE, OR DISCLOSE, IN WHOLE OR PART, ANY SUCH INFORMATION WITHOUT WRITTEN AUTHORIZATION FROM HYDRO-GEAR.

CHANGES

(P)
 RELEASED FOR PRODUCTION
 05/14/10 R.GAGNON
 06/04/10 R.GAGNON
 ECN #28259
 (P1)
 UPDATED GRAPHICS
 10/19/10 R.GAGNON
 ECN #29211



ITEM	PART #	QTY	DESCRIPTION
1	44133	1	NUT, HEX JAM 1/2-20 W/PATCH
2	53811	1	FAN 6.0 (10 BLADE)
3	53815	1	PULLEY ϕ 4.0 INCH
4	53812	1	HUB, PULLEY
5	51523	1	WASHER, OD SLOTTED .53 X 1.63 X .06



1411 S. HAMILTON ST. SULLIVAN, IL 61951 PHONE (217) 728-2581

DRAWING INTERPRETATION
 PER ASME Y14.5M-1994

DRAWN IN INCHES
 PART VOLUME N/A IN³
 DATE DRAWN 08/17/09
 DRAWN BY C.GOONAN

TOLERANCES
 UNLESS SPECIFIED
 .0 ±.020
 .00 ±.010
 .000 ±.005
 ANGLE ±1°

I-DEAS
 LAST USED
 SIZE SCALE
 C FULL
 FORMER PART NUMBER
 X8738

MATERIAL:
 FINISH:

NAME: KIT, FAN/PULLEY

SHEET 1 OF 1
 PART NUMBER
 72136

CHG
 (P1)