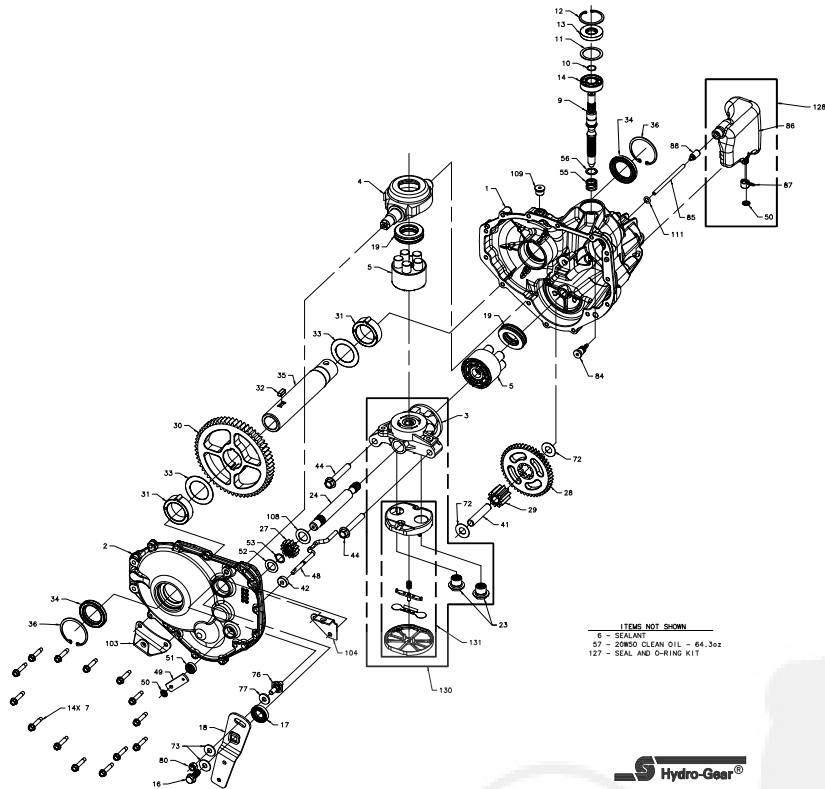


# Parts Breakdown

316-0410

NOTICE / Proprietary Information: This service schematic and its contents are wholly owned by Hydro-Gear of Sullivan, IL, and may not be published or reproduced without the written consent of Hydro-Gear.



## Parts Breakdown

| #  | PART #  | DESCRIPTION                            | QTY     | Note |
|----|---------|--|---------|------|
| 1  | 70830   | KIT, MAIN HOUSING                      | 1       |      |
|    |         | HOUSING, MAIN                          | 1       |      |
|    |         | BUSHING .865 X .985 X .790             | 1       |      |
|    |         | PIN, STANDARD HEADLESS                 | 2       |      |
| 2  | 70831   | KIT, HOUSING, SIDE                     | 1       |      |
|    |         | HOUSING, SIDE                          | 1       |      |
|    |         | BUSHING, .624 X .719 X .562            | 1       |      |
|    |         | BUSHING, .865 X .985 X .790            | 1       |      |
| 3  | 51208   | CENTERSECTION 0510                     | 1       |      |
|    |         | CENTER SECTION (5-PISTON)              | 1       |      |
|    |         | BUSHING .707 X .786 X .591             | 1       |      |
| 4  | 51048   | TRUNNION, SWASHPLATE                   | 1       |      |
| 5  | 70331   | KIT, BLOCK, 10CC CYLINDER              | 2       |      |
|    |         | BLOCK, CYLINDER                        | 1       |      |
|    |         | PISTON                                 | 5       |      |
|    |         | SPRING, COMPRESSION                    | 5       |      |
|    |         | WASHER, THRUST                         | 5       |      |
| 6  | 50928   | SEALANT TUBE                           | 10.1 oz |      |
| 7  | 51190   | SCREW, HEX FLANGE 1/4-20 X 1.25        | 14      |      |
| 9  | 51062   | SHAFT INPUT                            | 1       |      |
| 10 | 2000022 | RING RET 67 EXT WIRE                   | 1       |      |
| 11 | 50951   | WASHER 1.23 X 1.57 X .04               | 1       |      |
| 12 | 50329   | RING RET 156 INT                       | 1       |      |
| 13 | 51161   | SEAL 17 X 40 X 7 LIP                   | 1       |      |
| 14 | 50315   | BEARING 17X40X12 BALL OPEN 6203        | 1       |      |
| 16 | 51064   | BOLT 5/16-24 X .94 HF (PATCH)          | 1       |      |
| 17 | 51140   | SEAL 18 X 32 X 7 LIP                   | 1       |      |
| 18 | 51680   | ARM, CNTRL                             | 1       |      |
| 19 | 50551   | BEARING 30X52X13 BALL THRUST           | 2       |      |
| 23 | 51485   | PLUG, CHECK .027, WASHER, SPRING       | 2       |      |
| 24 | 51661   | SHAFT MOTOR                            | 1       |      |
| 27 | 51130   | GEAR, 13T PINNION                      | 1       |      |
| 28 | 51129   | GEAR, 10T/48T                          | 1       |      |
| 29 | 51043   | GEAR, 10T JACKSHAFT                    | 1       |      |
| 30 | 51728   | GEAR, 60T BULL KEYED                   | 1       |      |
| 31 | 51920   | BEARING, SLEEVE - 2.025 X 1.226 X .625 | 2       |      |
| 32 | 51861   | KEY, SQUARE - .250 X .610              | 1       |      |
| 33 | 51922   | WASHER 1.48 X 2.25 X .038              | 2       |      |
| 34 | 51918   | SEAL 1.457 X 2.087 X .276 LIP          | 2       |      |
| 35 | 51868   | TUBE 1.01 X 1.457/1.354 X 8.08 KEY     | 1       |      |
| 36 | 52026   | RING RET 200 INT                       | 2       |      |
| 41 | 51083   | JACK SHAFT (PIN)                       | 1       |      |
| 42 | 51100   | MAGNET, RING                           | 1       |      |
| 44 | 50016   | SCREW 3/8-24 X 2.5 HF W/PATCH          | 2       |      |
| 48 | 51668   | ROD BYPASS ACTUATOR                    | 1       |      |
| 49 | 51669   | ARM, BYPASS                            | 1       |      |

## Parts Breakdown

| #   | PART #       | DESCRIPTION                            | QTY     | Note |
|-----|--------------|--|---------|------|
| 50  | 51116        | RING RET 25 EXT PUSH                   | 2       |      |
| 51  | 51081        | SEAL .25 X .75 X .25 LIP TC            | 1       |      |
| 52  | 44371        | WASHER .63 X 1.0 X .05 FLAT            | 1       |      |
| 53  | 44145        | RETAINING RING, MOTOR SHAFT            | 1       |      |
| 55  | 2003014      | SPRING, BLOCK                          | 1       |      |
| 56  | 2003017      | WASHER .59 X .79 X .04 FLAT            | 1       |      |
| 57  |              | OIL, 20W50                             | 64.3 oz |      |
| 72  | 50132        | WASHER .51 X 1.10 X .03 FLAT           | 2       |      |
| 73  | 44130        | WASHER .34 X .88 X .06                 | 2       |      |
| 76  | 50426        | STUD 5/16-24X1.5 SHORT                 | 1       |      |
| 77  | 50281        | PUCK FRICTION                          | 1       |      |
| 80  | 50317        | NUT HEX 5/16-24 UNF NYLON INSERT       | 1       |      |
| 84  | 51143        | FITTING 5/16 SAE, 5/32 TUBE            | 1       |      |
| 85  | 51672        | HOSE 3/16 EXP TANK                     | 1       |      |
| 86  | 52067        | TANK EXPANSION                         | 1       |      |
| 87  | 51251        | CAP EXPANSION                          | 1       |      |
| 88  | 51674        | WEIGHT 5/32 BARBED                     | 1       |      |
| 103 | 51679        | BRACKET, TORQUE                        | 1       |      |
| 104 | 51681        | BRACKET, TORQUE                        | 1       |      |
| 107 | 51134        | DEFLECTOR                              | 1       |      |
| 108 | 51069        | WASHER .71 X 1.16 X .04 FLAT           | 1       |      |
| 109 | 9005110-5600 | PLUG 9/16-18 METAL                     | 1       |      |
| 111 | 51144        | O-RING -109 .103 X .299                | 1       |      |
| 127 | 70832        | KIT, ORING-SEAL                        | 1       |      |
|     |              | SEAL, LIP .250 X .750 X .250 TC        | 1       |      |
|     |              | SEAL, LIP 18 X 32 X 7                  | 1       |      |
|     |              | O-RING .299 X .505 X .103              | 1       |      |
|     |              | SEAL, LIP 1.457 X 2.087 X .276         | 2       |      |
|     |              | SEAL, LIP 17 X 40 X 7                  | 1       |      |
| 128 | 71303        | KIT, EXPANSION TANK                    | 1       |      |
|     |              | TANK, EXPANSION ASSEMBLY               | 1       |      |
|     |              | CAP, BARBED VENT                       | 1       |      |
|     |              | RING, RETAINING .250 EXTERNAL          | 1       |      |
| 130 | 70829        | CENTER SECTION FILTER BYPASS ASSEMBLY  | 1       |      |
|     |              | KIT, CENTER SECTION (5 PISTON)         | 1       |      |
|     |              | CHECK PLUG, .027 BLEED, WASHER, SPRING | 2       |      |
|     |              | KIT, FILTER                            | 1       |      |
| 131 | 71029        | FILTER ASSEMBLY                        | 1       |      |
|     |              | FILTER                                 | 1       |      |
|     |              | BASE, FILTER                           | 1       |      |
|     |              | DEFLECTOR                              | 1       |      |
|     |              | SPRING, BYPASS                         | 1       |      |
|     |              | ACTUATOR, BYPASS                       | 1       |      |