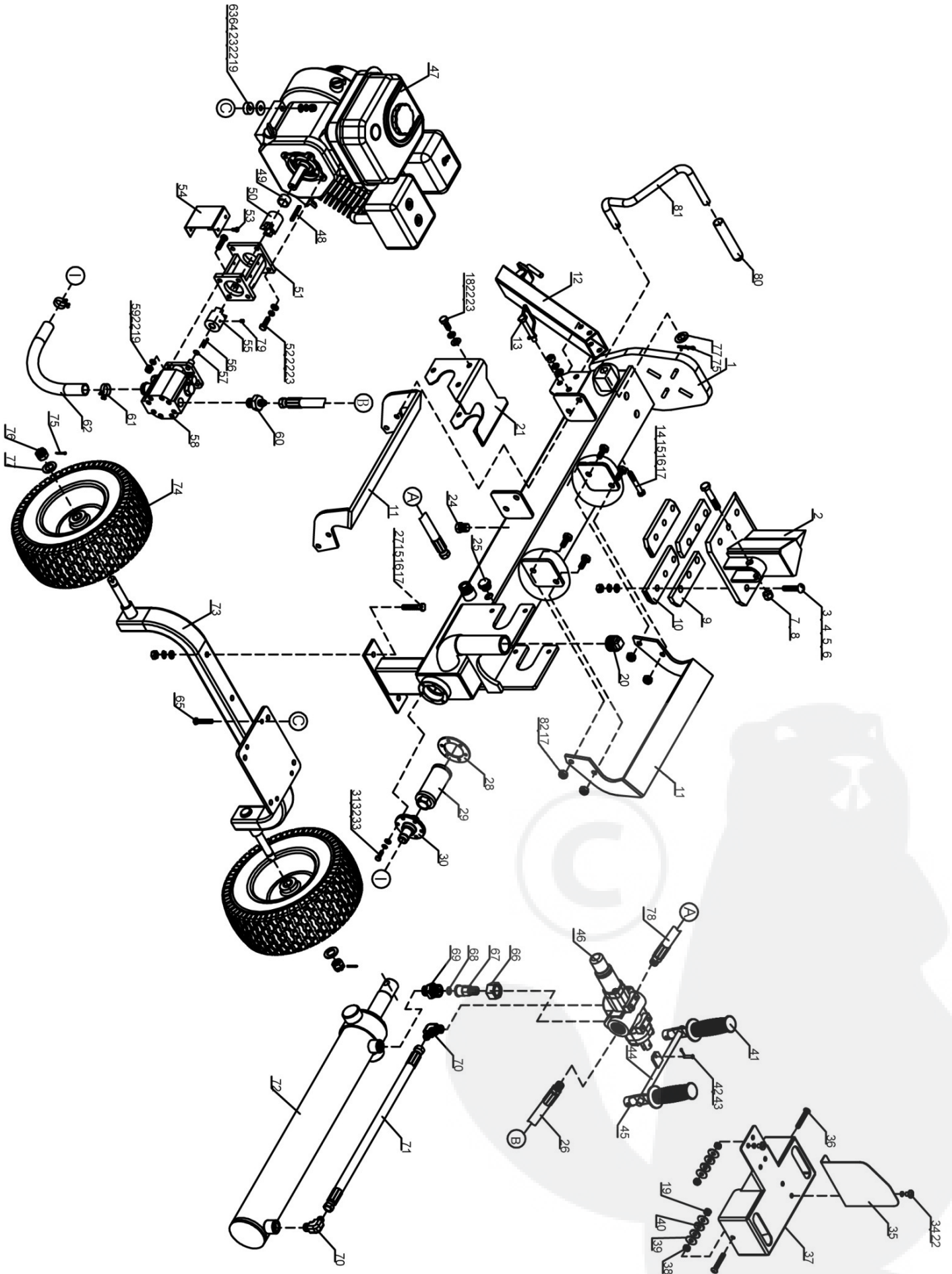


XLZLSE12



SP Ref#	Eurogarden Ref#	Description	Qty on each product
1	LZLSE12-1	Beam	1
2	LZLSE12-2	Wedge	1
3	LZLSE12-3	Screw M12x55	6
4	LZLSE12-4	Flat Washer Ø12	6
5	LZLSE12-5	Lock Washer Ø12	6
6	LZLSE12-6	Thick Hex Nut M12	6
7	LZLSE12-7	Hex Bolt M12x65	1
8	LZLSE12-8	Nylon Lock Nut M12	1
9	LZLSE12-9	Wedge Spacer	2
10	LZLSE12-10	Wedge Plate	2
11	LZLSE12-11	Log Cradle	2
12	LZLSE12-12	Front Support Leg	1
13	LZLSE12-13	Lock Pin A	1
14	LZLSE12-14	Hex Bolt M10x90	1
15	LZLSE12-15	Flat Washer Ø10	3
16	LZLSE12-16	Lock Washer Ø10	3
17	LZLSE12-17	Nylon Lock Nut M10	11
18	LZLSE12-18	Hex Bolt M8x20	6
19	LZLSE12-19	Nylon Lock Nut M8	10
20	LZLSE12-20	Oil Bolt	1
21	LZLSE12-21	Cylinder Cover	1
22	LZLSE12-22	Lock Washer Ø8	24
23	LZLSE12-23	Flat Washer Ø8	14
24	LZLSE12-24	Oil Plug	1
25	LZLSE12-25	Oil Scale	1
26	LZLSE12-26	Oil Inlet Pipe	1
27	LZLSE12-27	Hex Bolt M10x55	2
28	LZLSE12-28	Seal Ring	1
29	LZLSE12-29	Oil Filter	1
30	LZLSE12-30	Oil Filter Mounting Plate	1
31	LZLSE12-31	Hex Bolt M6x20	6
32	LZLSE12-32	Lock Washer Ø6	6
33	LZLSE12-33	Flat Washer Ø6	6
34	LZLSE12-34	Inner Hex Screw M8x16	6
35	LZLSE12-35	Spacer Plate	1
36	LZLSE12-36	Screw M8x50	2
37	LZLSE12-37	Frame	1
38	LZLSE12-38	Hex Nut M8	2
39	LZLSE12-39	Big Flat Washer Ø8	4
40	LZLSE12-40	Nylon Lock Washer	4
41	LZLSE12-41	Plastic Handle Grip	2
42	LZLSE12-42	Hinge Pin	1
43	LZLSE12-43	Cotter Pin Ø2x10	1
44	LZLSE12-44	Connecting Tube	1
45	LZLSE12-45	Handle	2
46	LZLSE12-46	Control Valve	1

SP Ref#	Eurogarden Ref#	Description	Qty on each product
48	LZLSE12-48	Engine Flat Key	1
49	LZLSE12-49	Engine Bushing	1
50	LZLSE12-50	Engine Coupler	1
51	LZLSE12-51	Gear Pump Stand	1
52	LZLSE12-52	Hex Bolt M8x25	4
53	LZLSE12-53	Hex Bolt M5x10	4
54	LZLSE12-54	Coupler Cover	1
55	LZLSE12-55	Gear Pump Coupler	1
56	LZLSE12-56	Gear Pump Flat Key	1
57	LZLSE12-57	Steel Wire Snap Ring for Shaft	1
58	LZLSE12-58	Gear Pump	1
59	LZLSE12-59	Hex Bolt M8x30	4
60	LZLSE12-60	Angle Connector	1
61	LZLSE12-61	Clamp	2
62	LZLSE12-62	Oil Pipe	1
63	LZLSE12-63	Polyurethane Block	4
64	LZLSE12-64	Big Flat Washer Ø10	4
65	LZLSE12-65	Hex Bolt M8x65	4
66	LZLSE12-66	Nut	1
67	LZLSE12-67	Valve B Joiner	1
68	LZLSE12-68	O Ring Ø16x2.5	1
69	LZLSE12-69	Cylinder Front Cover Joint	1
70	LZLSE12-70	Oil Inlet Connector	2
71	LZLSE12-71	Hydraulic Hose (Valve-Cylinder)	1
72	LZLSE12-72	Cylinder	1
73	LZLSE12-73	Wheel Stand	1
74	LZLSE12-74	Wheel	2
75	LZLSE12-75	Cotter Pin Ø4x30	3
76	LZLSE12-76	Thin Hex Slotted Nut M16	2
77	LZLSE12-77	Flat Washer Ø16	3
78	LZLSE12-78	Oil Return Pipe	1
79	LZLSE12-79	Screw M6x10	1
80	LZLSE12-80	Handle Grip	1
81	LZLSE12-81	Handle Bar	1
82	LZLSE12-82	Hex Bolt M10x25	8