

# Pièces de rechange

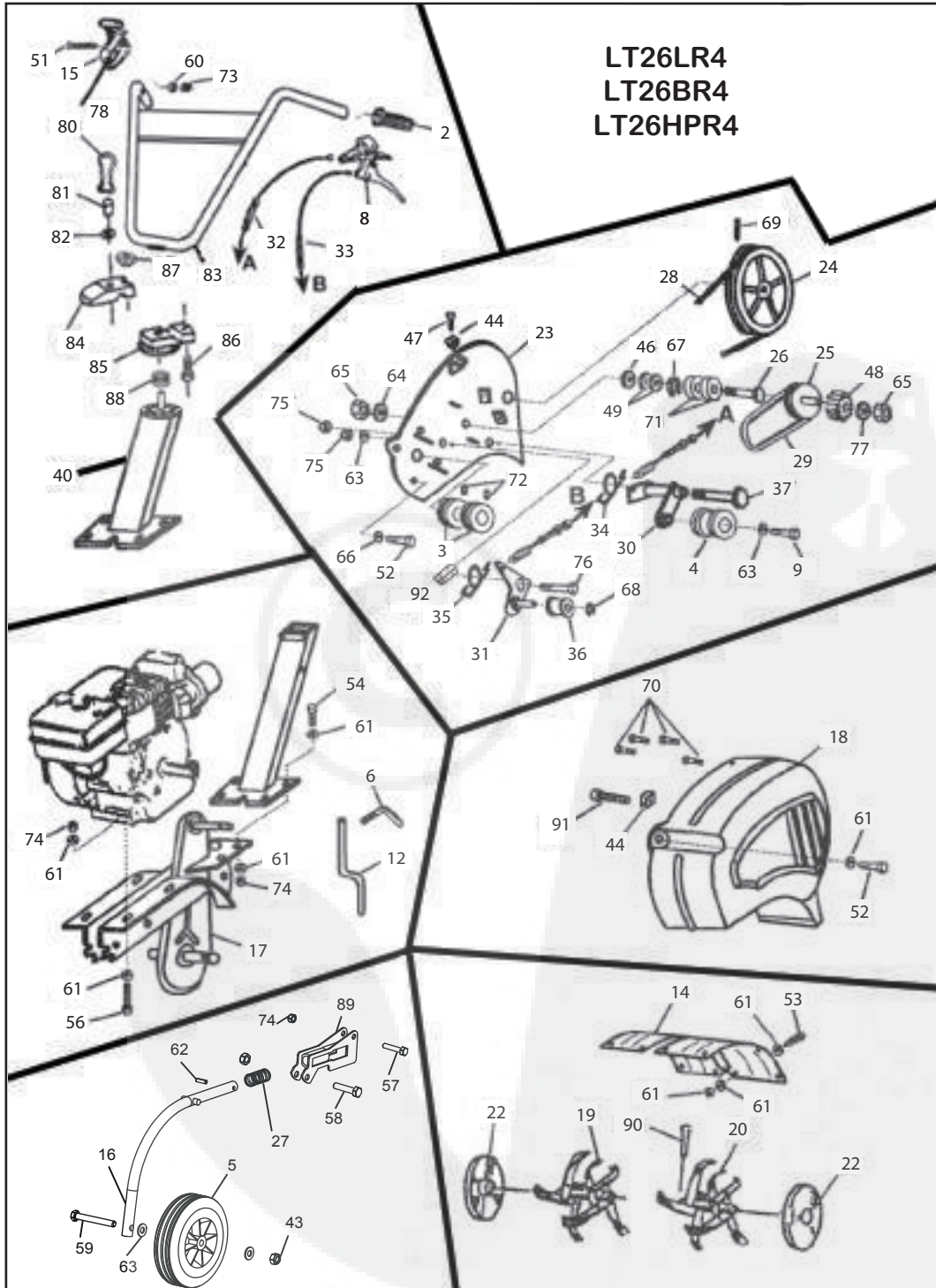
LT26LR4

LT26BR4

LT26HPR4



# Eurogarden



# Eurogarden : LT26LR4 - LT26BR4 - LT26HPR4

Rep	Réf.	Désignation	Part name	Bezeichnung	Descrizione	Description	Omschrijving	Designação	Qté
2	FSPO111	Poignée	Handelbar grip	Sterzgriff	Manopola	Empunadura	Handgriep	Pega	2
3	P305440	Poulie	Pulley	Treibrad	Puleggia	Polea	Riemenschijf	Polia	2
4	P305540	Galet	Tensionewheel	Riemenspannrolle	Puleggia	Polea	Rol	Polia	1
5	FSROU162	Roue	Wheel	Rad	Ruota	Rueda	Wiel	Roda	1
6	P306151	Cheville	Pin	Splint	Perno	Pasador	Pen	Retentor	1
8	FSLEV44	Poignée	Handelbar grip	Sterzgriff	Manopola	Empunadura	Handgriep	Pega	1
9	QSTH10020EZ8	Vis	Screw	Schraube	Vite	Tornillo	Schroef	Parafuso	1
12	P336991	Eperon	Leg	Stütze	Puntone	Espolon	Spoorstang	Apoio	1
14	P338261	Capot d'outils	Cover	Haube	Coperchio	Capo	Kap	Cobertua	1
15	FSMANET21	Commande d'accélération	Throttlecontrol	Gashebel gestange	Acceleratore	Mando	Gaskabel	Accelerator	1
16	315531	Bras de roue	Wheelarm	Rad vorrichtung	Supporta ruota	Leva	Vielarm	Braço	1
17	P390051	Carter	Caser	Getriekasten	Carter	Carter	Arandrijkap	Carter	1
18	P390070	Capot	Cover	Haube	Coperchio	Capo	Kap	Cobertua	1
19	315731	Etoile D	Hoe wheel	Kranz	Fresa	Corona	Linkfrees	Coroa	2
20	315771	Etoile G	Hoe wheel	Kranz	Fresa	Corona	Linkfrees	Coroa	2
22	315621	Disque	Disc	Scheibe	Dischi	Disco	Schijf	Disco	2
23	P390131	Platine	Support	Träger	Supporto ruota	Soporte	Steun	Suporte	1
24	P390140	Poulie	Pulley	Treibrad	Puleggia	Polea	Riemenschijf	Polia	1
25	P390150	Poulie	Pulley	Treibrad	Puleggia	Polea	Riemenschijf	Polia	1
26	P390160	Axe	Pin	Achse	Astina	Eje	Wielas	Eixo	1
27	315600	Ressort	Spring	Feder	Molla	Muelle	Veer	Parafuso	1
28	P390180	Courroie	Belt	Riemen	Cinghia	Correa	Riem	Correia	1
29	P390190	Courroie	Belt	Riemen	Cinghia	Correa	Riem	Correia	1
30	P390201	Bras de galet	Arm	Vorrichtung	Leva	Leva	Rolarm	Braço	1
31	P390211	Bras de galet	Arm	Vorrichtung	Leva	Leva	Rolarm	Braço	1
32	P392760	TimonerieM.Av	Clutch control	Gestange	Cavo semovenza	Mando de embrague	Koppelingsstang	Comando	1
33	P392770	TimonerieM.Ar	Cluteh control	Gestange	Cavo semovenza	Mando de embrague	Koppelingsstang	Comando	1
34	P390240	Ressort	Spring	Feder	Molla	Muelle	Veer	Parafuso	1
35	P390250	Ressort	Spring	Feder	Molla	Muelle	Veer	Parafuso	1
36	P390280	Galet	Tensionewheel	Riemenspannrolle	Puleggia	Polea	Rol	Polia	1
37	P390310	Axe	Achse	Träger	Astina	Eje	Wielas	Eixo	1
40	314931	Potence	Fixed stanchion	Träger	Supporto	Soporte	Steun	Suporte	1
43	QSHF10Z	Ecrou	Nut	Scheibe	Rondella	Arandela	Ring	Anilha	1
44	P390920	Clips	Clips	Clips	Clips	Clips	Veering	Grampos	2
46	P390940	Rondelle	Washer	Scheibe	Rondella	Arandela	Ring	Anilha	1
47	QSTH06016ZM	Vis	Screw	Schraube	Vite	Tornillo	Schroef	Parafuso	2
48	P391440	Pignon	Pinion	Ritzel	Ingranaggio	Pinon	Tanrad	Pinhao	1
49	P473200	Rondelle	Washer	Scheibe	Rondella	Arandela	Ring	Anilha	2
51	QSTH06045EZ8	Vis	Screw	Schraube	Vite	Tornillo	Schroef	Parafuso	1
52	QSUNF5/16X3/4ZM	Vis	Screw	Schraube	Vite	Tornillo	Schroef	Parafuso	4
53	QSTH08020EZ8	Vis	Screw	Schraube	Vite	Tornillo	Schroef	Parafuso	4
54	QSTH08025EZ8	Vis	Screw	Schraube	Vite	Tornillo	Schroef	Parafuso	4
56	QSTH08040EZ8	Vis	Screw	Schraube	Vite	Tornillo	Schroef	Parafuso	4
57	QSTH08040PZ8	Vis	Screw	Schraube	Vite	Tornillo	Schroef	Parafuso	1
58	QSTH10045PZ8	Vis	Screw	Schraube	Vite	Tornillo	Schroef	Parafuso	1
59	QSTH10080PZ8	Vis	Screw	Schraube	Vite	Tornillo	Schroef	Parafuso	1
60	QSMU06Z	Rondelle	Washer	Scheibe	Rondella	Arandela	Ring	Anilha	1
61	QSMU08Z	Rondelle	Washer	Scheibe	Rondella	Arandela	Ring	Anilha	27
62	QSGM06Z0	Goupille	Pin	Splint	Coppoglia	Pasador	Borgpen	Cavilha	1
63	QSMU10Z	Rondelle	Washer	Scheibe	Rondella	Arandela	Ring	Anilha	3
64	QSMU12Z	Rondelle	Washer	Scheibe	Rondella	Arandela	Ring	Anilha	1
65	QSHM12Z	Ecrou	Nut	Mutter	Dado	Tuerca	Moer	Parafuso	2
66	QSMU08Z	Rondelle	Washer	Scheibe	Rondella	Arandela	Ring	Anilha	3
67	QSCLO28I	Clips	Clip	Clip	Clips	Clips	Veering	Grampos	1
68	QSCLO10E	Clips	Clip	Clip	Clips	Clips	Veering	Grampos	1
69	QSGM0540	Goupille	Pin	Splint	Coppoglia	Pasador	Borgpen	Cavilha	1
70	QSTP03013Z	Vis	Screw	Schraube	Vite	Tornillo	Schroef	Parafuso	4
71	FSBEA6001C3	Roulement	Bearing	Kugellager	Rodiamento	Cojinete	Kogellager	Rolamento	2
72	QSST08010BU	Vis	Screw	Schraube	Vite	Tornillo	Schroef	Parafuso	2
73	QSHF06Z	Ecrou	Nut	Mutter	Dado	Tuerca	Moer	Parafuso	7
74	QSHF08Z	Ecrou	Nut	Mutter	Dado	Tuerca	Moer	Parafuso	19
75	QSHF10Z	Ecrou	Nut	Mutter	Dado	Tuerca	Moer	Parafuso	2
76	QSBHC10030ZM	Vis	Screw	Schraube	Vite	Tornillo	Schroef	Parafuso	1
77	QSMW12Z	Rondelle	Washer	Scheibe	Rondella	Arandela	Ring	Anilha	1
78	P305250	Cable de gaz	Cable gas	Kabelgas	Gas Cavo	Gas de cable	kabel gas	gás cabo	1
80	P311420	Lever	Lever	Hebel	Leva	Mando	Hendel	Alavanca	2
81	P311510	Ecrou	Nut	Mutter	Dado	Tuerca	Moer	Parafuso	2
82	QSMU12Z	Rondelle	Washer	Scheibe	Rondella	Arandela	Ring	Anilha	1
83	314891	Guidon	handlebar	Lenker	manubrio	manillar	stuur	guidão	1
84	P311820	Support	Support	Träger	Supporto	Soporte	Steun	Suporte	1
85	P334260	Support	Support	Träger	Supporto	Soporte	Steun - Suporte	Suporte	1
86	QSTH08035EB8	Vis	Screw	Schraube	Vite	Tornillo	Schroef	Parafuso	1
87	P392330	Bouton M8	Nut	Screw	Screw	Schraube	Vite	Parafuso	1
88	P397700	Ressort	Spring	Feder	Molla	Muelle	Veer	Parafuso	1
89	315571	Support bras de roue	Support	Unterstützung	supporto	Soporte	Ondersteuning	Apoio	1
90	GO0828	Goupille	Pin	Splint	Coppoglia	Pasador	Borgpen	Cavilha	1
91	QSTH06025ZM	Vis	Screw	Schraube	Vite	Tornillo	Schroef	Parafuso	1
92	P390370	Canon de bras de galet MAR	Canon follower arm	Canon Folgerarm	Braccio seguace Canon	Brazo seguidor Canon	Canon volger arm	Canon seguidor braço	1