

**A**

Exploded view diagram of the front handle assembly. It shows the handle frame (1), grip (2), and various mounting brackets and pins (3-10). The lower part of the diagram shows the handle being attached to the main body of the device, with parts 11 through 21 indicating the connection points and components.

**B**

Exploded view diagram of the rear handle assembly. It shows the handle frame (1), grip (2), and various mounting brackets and pins (3-10). The lower part of the diagram shows the handle being attached to the main body of the device, with parts 11 through 16 indicating the connection points and components.

**C**

Exploded view diagram of the motor and drive shaft assembly. It shows the motor housing (1), drive shaft (2), and various gears and bearings (3-13).

**D**

Exploded view diagram of the main body and control panel assembly. It shows the control panel (1), main body (2), and various mounting brackets and pins (3-11). The lower part of the diagram shows the control panel being attached to the main body, with parts 12 through 32 indicating the connection points and components.

**E**

Exploded view diagram of the wheel and suspension assembly. It shows the wheels (1), suspension arms (2), and various bearings and pins (3-33).

**F**

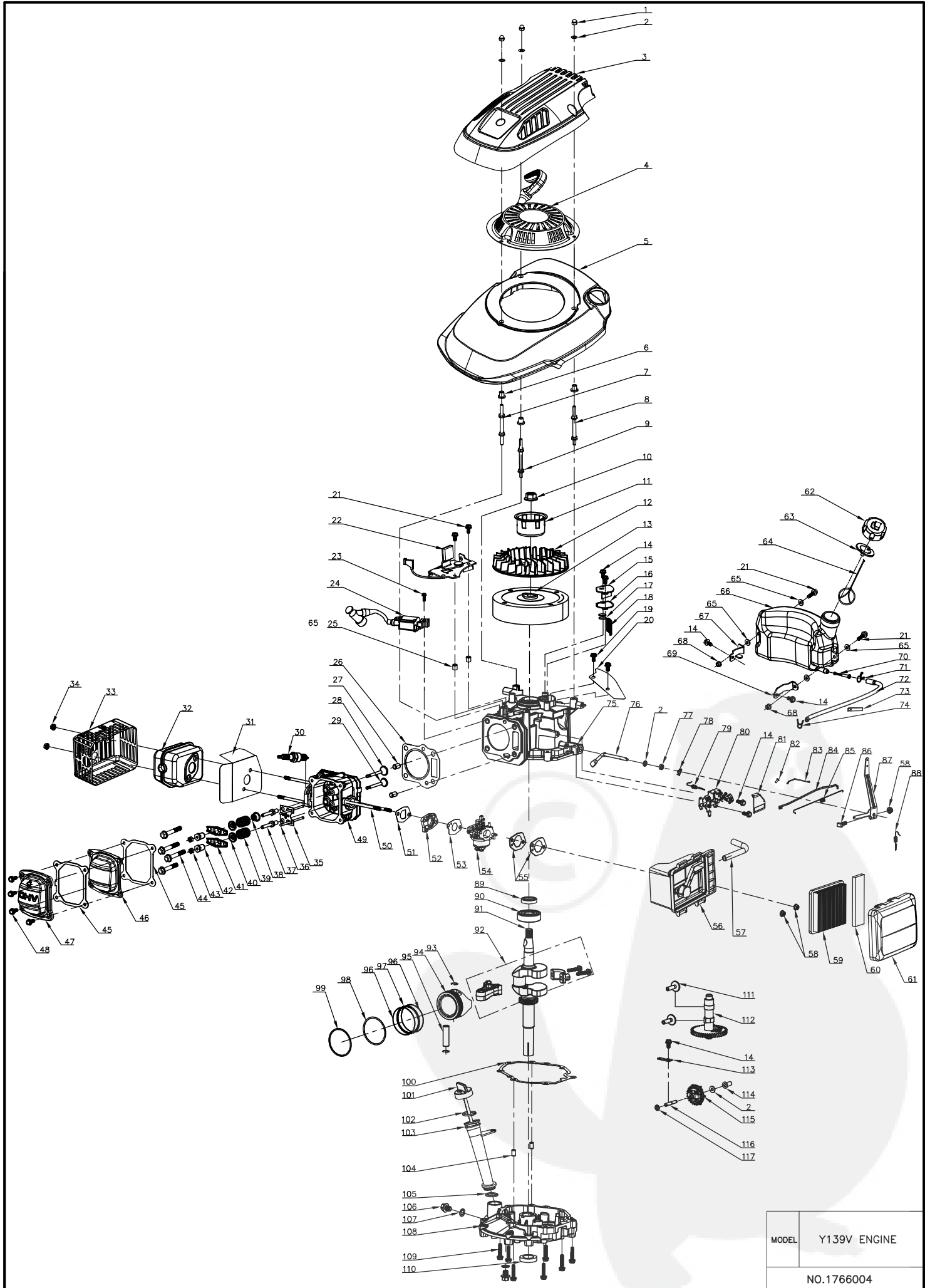
Exploded view diagram of the storage bin and front panel assembly. It shows the front panel (1), storage bin (2), and various mounting brackets and pins (3-7).

MODEL	G46SHL-B
NO.1766004	

Pos.no	Part no.		Qty
A	<b>Part A</b>		
A-1	G33Q0000110	Plastic Decoration	1
A-2	G3375000001	Clutch Lever	1
A-3	G3354000056	Brake Lever	1
A-4	G3XW0000000	Limiting Stopper	1
A-5	G33Q0000119	Plastic Decoration	1
A-6	G3320000000	Foam Pipe	1
A-7	G333F100056	Upper Handle	1
A-8	G339X300000	Cable Fixing Clamp	1
A-9	G339XX60000	Brake Cable	1
A-10	G339XYA0000	Clutch Cable	1
A-11	G33B4000056	Lower Handle	1
A-12	B1088W08050	Bolt	4
A-13	B5019W00000	Flat Washer	4
A-14	G33C1100073	Knob	4
A-15	B2020W00000	Nut	4
A-16	G33K0000000	Rope Guide	1
A-17	B2011B00000	Nut	1
A-18	G33H0000000	Cable Support	2
A-19	B1087W08032	Bolt	2
A-20	B2009W00000	Nut	2
A-21	G33J0000000	Handle Plug	2
B	<b>Part B</b>		
B-1	G33F0000000	Upper Cover of Left Panel	1
B-2	G33P0000000	Screw	2
B-3	G33N0000000	Spring	2
B-4	G33L0000019	Handle	2
B-5	G33R0000000	Cable	1
B-6	B2008W00000	Nut	6
B-7	G33M0000000	Bolt	2
B-8	B1065W06030	Nut	2
B-9	B1047W06040	Nut	2
B-10	G33G0000000	Lower Cover of Left Panel	1
B-11	B3034W00000	Screw	4
B-12	B3032W00000	Screw	6
B-13	G33E0000060	Handle Panel	1
B-14	G33FX000000	Upper Cover of Right Panel	1
B-15	G33T0000000	Bush	1
B-16	G33SS000000	Cable	1
B-17	G33GX000000	Lower Cover of Right Panel	1
C	<b>Part C</b>		
C-1	Y2TZ0000060	Engine	1
C-2	B1077W08025	Nut	3
C-3	BE001W00000	Flat Key	1
C-4	G34AWY00000	Blade Adapter	1
C-5	G22K0000000	Screw Cap	2

Pos.no	Part no.		Qty
C-6	G323N000000	Belt Cover	1
C-7	B3022W00000	Screw	2
C-8	G323G000000	Belt Cover Plate1	1
C-9	G323H000000	Belt Cover Plate2	1
C-10	B3034W00000	Screw	2
C-11	G3510000000	18" Blade	1
C-12	G3520000000	Blade Washer	1
C-13	B1001B00032	Blade Bolt	1
D	<b>Part D</b>		
D-1	B1036W08015	Bolt	4
D-2	G34BD000000	Height Adjustment Plate	1
D-3	G32B0000000	Right Bracket	1
D-4	B2009W00000	Nut	4
D-5	G3217Y00056	Deck	1
D-6	G36M0000000	Mulching Plug	1
D-7	G32E0000000	Cable Sleeve	1
D-8	BD001B00000	Seal Ring	1
D-9	G32D0000100	Washing Linker	1
D-10	B2025B00000	Screw	1
D-11	G32C0000000	Left Bracket	1
D-12	G32J0000000	Rear Cover Support	2
D-13	B1059W06014	Nut	3
D-14	G32A0000000	Rear Cover Pedestal	1
D-15	B2008W00000	Nut	3
D-16	G32K0000000	plug	2
D-17	G36B0000010	Rear Cover	1
D-18	G36J0000000	Rear Cover Spring	1
D-19	G36E0000000	Rear Cover Shaft	1
D-20	G3241100019	Front Plastic Face Handle	1
D-21	B3034W00000	19" Blade	4
D-22	G3241000010	Front Plastic Face	1
D-23	B3044W00000	Screw	4
D-24	G32F0000000	Washer R	1
D-25	G32G0000000	Washer L	1
D-26	B2007W00000	Nut	2
D-27	G3250000000	Side Discharge Bracket	1
D-28	B1052W05010	Nut	2
D-29	G3260000000	Side Discharge Cover Shaft	1
D-30	G3271000000	Side Discharge Cover Spring	1
D-31	G3280000000	Side Discharge Cover	1
D-32	G3290000000	Side-Discharge Guiding Board	1
E	<b>Part E</b>		
E-1	G3420000019	Height Adjustment Handle	1
E-2	G3490000300	Rear Wheel Shaft Assy	1
E-3	G34AC000000	Inner Wheel Cover	2
E-4	B6009B00000	Spring Washer	4

Pos.no	Part no.		Qty
E-5	B1057W06010	Nut	2
E-6	B0014W00000	Ball Bearing	4
E-7	G34L0000000	10" Wheel Assy	2
E-8	B5031W00000	Flat Washer	2
E-9	B2017W00000	Nut	4
E-10	G34V0000019	10" Outer Wheel Cover	2
E-11	BB004W00000	Split Pin	1
E-12	BA00FB00000	Belt Li650	1
E-13	G34APY00000	Gearbox	1
E-14	G34AJ000200	Spring	1
E-15	G34AN000000	Pin	2
E-16	B2007W00000	Nut	4
E-17	G34D0000000	Shaft Sleeve	2
E-18	B1053W05012	Nut	4
E-19	B9006B00000	Lock Ring	4
E-20	B5033W00000	Flat Washer	2
E-21	G54AL000000	Left Gear	1
E-22	G54AM000000	Right Gear	1
E-23	G3451Y00000	Front Wheel Shaft	1
E-24	B2008W00000	Nut	5
E-25	B1058W06012	Nut	5
E-26	B2016W00000	Nut	1
E-27	B0019W00000	Bearing	4
E-28	G24F0000000	7" Wheel	2
E-29	G24R2000019	7" Outer Wheel Cover	2
E-30	G34AX100000	Height Adjustment Spring	1
E-31	G3410000100	Height Adjustment Connecting Rod	1
E-32	G349X000000	Precursor axle	4
E-33	G34APX20000	Limit Kits	1
F	<b>Part F</b>		
F-1	G3661200000	Metal Bracket	1
F-2	B5032W00000	Flat Washer	4
F-3	B3022W00000	Screw	4
F-4	G3661110010	Plastic Cover	1
F-5	G3661120010	Cover Plate	1
F-6	G3641130019	Indicated Board	1
F-7	G1700100000	Fabric Bag	1



MODEL	Y139V ENGINE
NO.1766004	

Pos No	Part No.	Description	Qty
1	B2002B00000	Nut M6	3
2	B5027B00000	"O" Ring $\phi 6.5 \times \phi 15 \times 0.5$	4
3	Y2A11000056	Engine Cover	1
4	Y2A20000000	Recoil Start Assy	1
5	Y2A30000000	Blower Housing	1
6	Y2A40000000	Bush	3
7	Y2A70000000	Bolt I	1
8	Y2A80000000	Bolt II	1
9	Y2A90000000	Bolt III	1
10	B2015W00000	Nut M14*1.5	1
11	Y2A50000000	Start-up Hub	1
12	Y2A60000000	Fan	1
13	Y2B10000000	Flywheel	1
14	B1058W06012	Bolt M6*12	7
15	Y2250000000	Respirator Cover Plate	1
16	Y2240000000	Gasket of Respirator Cover	1
17	Y2230000000	Valve Element	2
18	Y2220000000	Lubricate Filtering Net	1
19	B1057W06010	Bolt M6*10	2
20	Y2AA00000000	Back plate	1
21	B1063W06022	Bolt M6*22	4
22	Y2710000100	Brake Assy	1
23	B1064W06025	Bolt M6*25	1
24	Y2B20000000	Ignition	1
25	Y27X00000000	Bush	2
26	Y2120000000	Gasket of Cylinder Head	1
27	Y2260000000	Locating Pin	2
28	Y2520000000	Inlet valve	1
29	Y2530000000	Outlet valve	1
30	Y2B30000000	Spark Plug	1
31	Y2930000000	Gasket of Muffler	1
32	Y2910000000	Muffler Assy	1
33	Y2920000000	Muffler Cover Assy	1
34	B2016W00000	Locknut M6	2
35	Y25E00000000	Handspike Assy	1
36	Y25C00000000	Guide Board of Handspike	2
37	Y2580000000	Rocker Support Bolt of Valve	2
38	BC011H00000	Oil Seal of valve	1
39	Y2540000000	Spring of Valve	2
40	Y2550000000	Spring Coil of outlet Valve	2

Pos No	Part No.	Description	Qty
41	Y2570000000	Rocker of Valve	2
42	Y2590000000	Adjust Nut of Valve	2
43	Y25A0000000	Combined Nut	2
44	B1044W08045	Bolt M8*45	4
45	Y2130000000	Gasket of Cylinder Head Cover	2
46	Y2140000000	Cylinder Head Inner Cover	1
47	Y2150000000	Cylinder Head Outer Cover	1
48	B1059W06014	Bolt M6*14	4
49	Y21110000000	Cylinder Head Assy	1
50	B4003W06092	Two Stud Bolt M6*92	4
51	Y2810000000	Paper Gasket of Inlet Pipe	1
52	Y2820000000	Air Inlet Pipe	1
53	Y2830000000	Paper Gasket of Carburetor	1
54	Y2850000000	Carburetor Assy	1
55	Y2840000000	Paper Gasket of Air Filter	2
56	Y2870000000	Air Filter Pedestal	1
57	Y28A0000000	Exhaust Pipe $\phi 8^* \phi 12^* 165$	1
58	B2012W00000	Bolt M6	3
59	Y2880000000	Paper Filter Element	1
60	Y28C0000000	Filter Element	1
61	Y2860000000	Air Filter Upper Cover	1
62	Y28H0000000	Fuel Tank Cap	1
63	Y28F0000000	Seal Gasket of Fuel Tank Cap	1
64	Y28T0000000	Connecting Rope	1
65	Y28S0000000	Gasket	4
66	Y28D0000000	Fuel Tank	1
67	Y28N0000000	Right Bracket of Fuel Tank	1
68	B2008W00000	Locknut M6	2
69	Y28M0000000	Left Bracket of Fuel Tank	1
70	Y28E0000000	Filtering Net Duct of Fuel	1
71	Y28K0000000	Oil Pipe Circlip I	1
72	Y28J0000000	Oil Pipe	1
73	Y28U0000000	Oil Pipe Fixing Clip	1
74	Y28L0000000	Oil Pipe Circlip II	1
75	Y2210000000	Crankcase Assy	1
76	Y2660000000	Speed Regulator Rocker Spindle	1
77	BC006B00000	Oil Seal 6*11*4	1
78	Y2670000000	Springness Split Pin	1
79	Y26A0000200	Speed Regulator Spring	1
80	Y2690000500	Speed Regulator choke assy	1

Pos No	Part No.	Description	Qty
81	Y2690000504	Plate	1
82	B300CW00000	Screw	1
83	Y26D0000600	Handspike of choke	1
84	Y26B0000000	Handspike of Valve	1
85	Y26C0000000	Spring of Valve	1
86	B1085W06023	"T" type Bolt M6*23	1
87	Y2680000100	#N/A	1
88	Y26A0000400	#N/A	1
89	BC003B00000	Oil Seal 22*35*7	1
90	B0008W00000	Ball bearing	1
91	Y2410000100	Crankshaft Assy	1
92	Y2470000000	Connecting Rod Assy	1
93	Y2490000000	Circlip of Piston Pin	2
94	Y2420000000	Piston Assy	1
95	Y2480000000	Piston Pin	1
96	Y2450000000	Scraper Ring	2
97	Y2460000000	Bushing Ring	1
98	Y2440000000	Piston Ring II	1
99	Y2430000000	Piston Ring I	1
100	Y2350000000	Gasket of Crankcase	1
101	Y233ZC00000	Lubricating Gauge	1
102	BD006B00000	O Ring	1
103	Y2320000000	Lubricating Pipe Assy	1
104	Y2360000000	Locating Pin of Crankcase	2
105	BD004H00000	"O" Ring $\phi 21 \times \phi 2.3$	1
106	B1016W10012	Draining Oil Bolt	2
107	B5021W00000	Draining Oil Bolt Gasket	2
108	Y2310000000	Crankcase Cover	1
109	B1065W06030	Bolt M6*30	7
110	BC004B00000	Oil seal 25*38*7	1
111	Y25B0000000	Tappet	2
112	Y2510000000	Camshaft Assy	1
113	Y2650000000	Gear Shaft Hold-down Plate	1
114	Y2640000000	Sliding Sleeve	1
115	Y2610000000	Gear Shaft Assy	1
116	Y2620000000	Circlip of Gear shaft	1
117	B5026W00000	Flat Washer	1