



REPAIR PARTS MANUAL
MODEL NO. WE2C651A
Lawn Mower

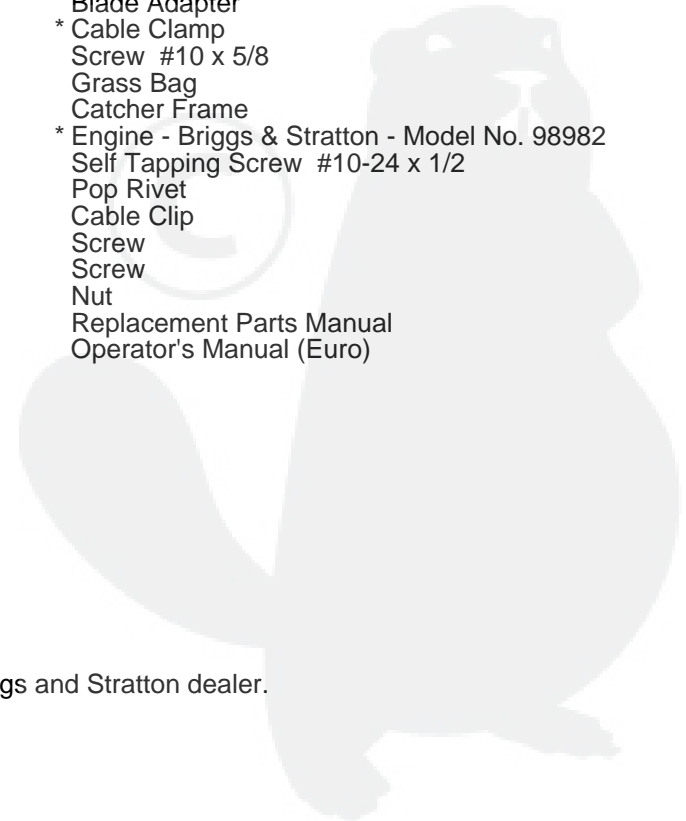
WEED EATER[®]

REPAIR PARTS

ROTARY MOWER MODEL NO. WE2C651A

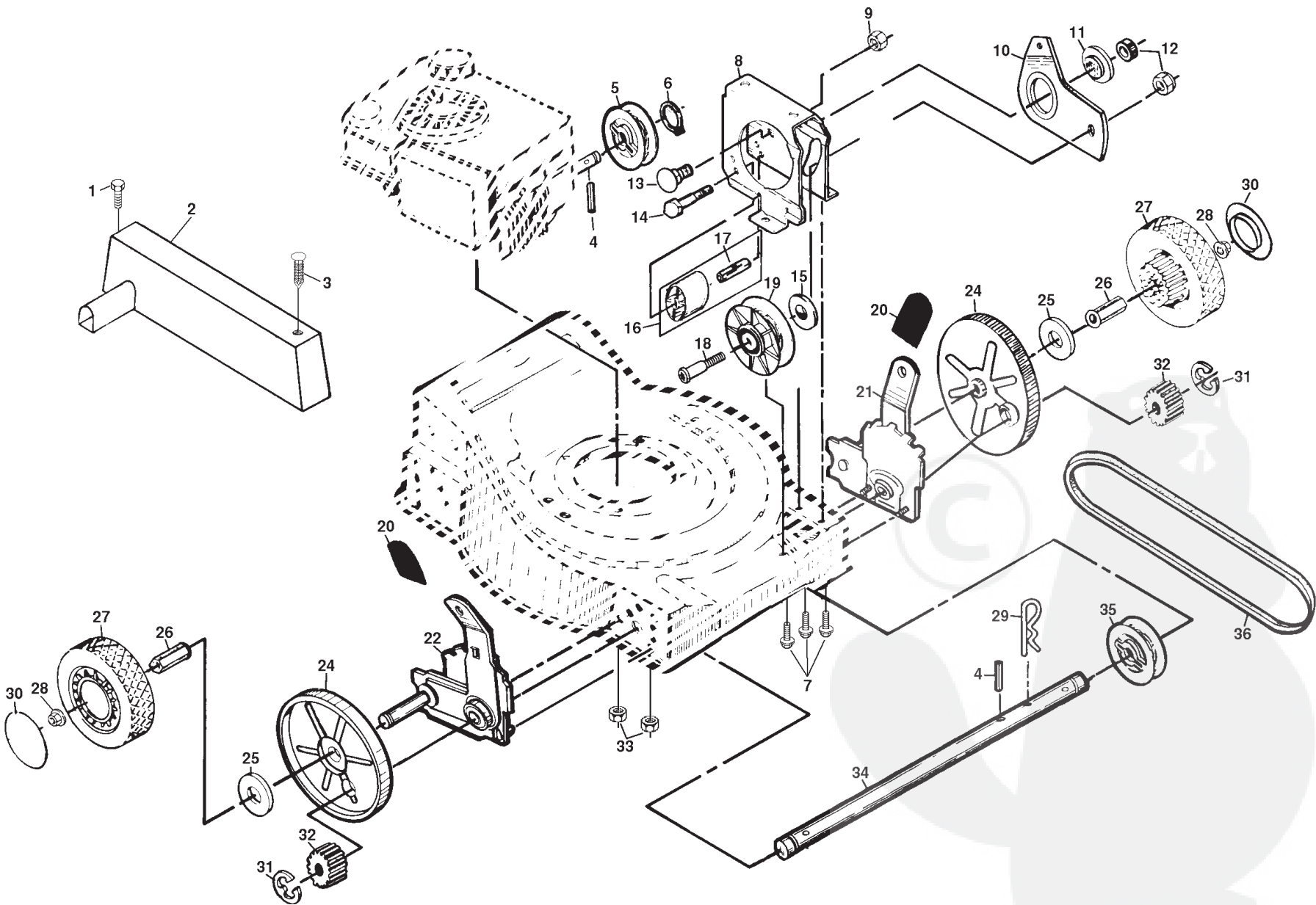
KEY NO.	PART NO.	DESCRIPTION	KEY NO.	PART NO.	DESCRIPTION
1	145793	Control Bar	42	53998	Flat Washer
2	145646X479	Upper Handle	43	54583	Hex Tapping Screw 1/4-20 x 1/2
3	157081X479	Lower Handle	44	133188X479	Discharge Baffle
4	132001	Rope Guide	45	850999	Hex Head Thread Rolling Screw 3/8-16 x 2
5	63601	Locknut 1/4-20	46	145494	Danger Decal
6	131959	Handle Bolt	48	850988	Engine Spacer
7	66426	Wire Tie	50	700063X479	Rear Baffle
8	158755	Hex Washer Head Screw 1/4-20 x 2	51	701640X479	Front Baffle
9	851462	Throttle Control	52	162189	Housing Assembly (Incl. Ref. #46)
11	130861	Engine Zone Control Cable	53	851084	Hex Head Bolt 3/8-24 x 1-3/8 Grd. 8
12	158742	Drive Control	54	850263	Helical Lock Washer
14	128638	Wing Nut	55	851074	Hardened Washer
15	51793	Hairpin Cotter	56	145106	20" Blade
17	145669	Drive Cable Guide	57	851514	Blade Adapter
19	156445X479	Back Plate	64	213146	* Cable Clamp
20	700363X479	Side Baffle	65	83816	Screw #10 x 5/8
21	146143X479	Foot Guard	67	147270	Grass Bag
23	147613	Rear Door Assembly Kit	68	750532	Catcher Frame
24	751592	Locknut 3/8-16	70	-----	* Engine - Briggs & Stratton - Model No. 98982
25	151589X479	Handle Bracket Assembly (Left)	72	150050	Self Tapping Screw #10-24 x 1/2
26	151588X479	Handle Bracket Assembly (Right)	73	128415	Pop Rivet
27	150078	Screw 5/16-18 x 3/4	74	87930	Cable Clip
29	750085X007	Wheel Adjusting Bracket	75	88652	Screw
30	146630	Spacer	76	158755	Screw
32	700331X004	Selector Spring	77	751152	Nut
33	87877	Selector Knob	--	161982	Replacement Parts Manual
34	145935X004	Axle Arm Assembly	--	152051	Operator's Manual (Euro)
35	62335	Belleville Washer			
36	142748	Shoulder Bolt 3/8-16			
37	146247	Wheel & Tire Assembly			
38	83923	Flanged Locknut			
40	77400	Hubcap			
41	146694	Screw			

* These parts must be purchased through an authorized Briggs and Stratton dealer.



REPAIR PARTS

ROTARY MOWER MODEL NO. WE2C651A



REPAIR PARTS

ROTARY MOWER MODEL NO. WE2C651A

KEY NO.	PART NO.	DESCRIPTION	KEY NO.	PART NO.	DESCRIPTION
1	141912	Hex Washer Head Screw #10-24 x 1/2	21	152018	Adjuster Assembly (Left)
2	154049	Drive Cover	22	152019	Adjuster Assembly (Right)
3	701477	Push Fastener	24	88080	Dust Cover
4	851980	Drive Pawl	25	67725	Washer
5	88043	Drive Pulley	26	88446	Wheel Bushing
6	12000030	Retaining Ring	27	700953	Wheel & Tire Assembly
7	54583	Screw 1/4-20 x 1/2	28	145212	Flanged Locknut
8	851947X004	Clutch Frame	29	85179	Retainer Clip
9	50962	Locknut 1/4-20	30	77400	Hubcap
10	702631X004	Clutch Lever	31	12000058	E-Ring
11	88067	Clutch Lever Spacer	32	137054	Pinion
12	750253	Locknut 5/16-18	33	63601	Locknut 1/4-20
13	72070504	Carriage Bolt 5/16-18 x 1/2	34	700537	Drive Shaft
14	74350424	Hex Head Screw 1/4-20 x 1-1/2	35	88082	Driven Pulley
15	88069	Spacer	36	111924X	Drive Belt
16	48160	Idler Assembly (Includes Key No. 17)	Available accessories not included with mower:		
17	88576	Idler Spacer	--	MA36	Chute Deflector
18	88517	Shoulder Bolt 5/16-18 x 1-3/8	--	MK20FRD	Mulcher
19	88516	Idler Pulley			
20	87877	Selector Knob			

5



SERVICE NOTES



SERVICE NOTES



CONGRATULATIONS on your purchase of a new lawn mower. Your lawn mower has been designed, engineered and manufactured to give you the best possible dependability and performance.

LIMITED WARRANTY

The Manufacturer warrants to the original consumer purchaser that this product as manufactured is free from defects in materials and workmanship. For a period of one (1) year from date of purchase by the original consumer purchaser, we will repair or replace, at our option, without charge for parts or labor incurred in replacing parts, any part which we find to be defective due to materials or workmanship. This Warranty is subject to the following limitations and exclusions.

1. This warranty does not apply to the engine, other than AYP manufactured transaxle/transmission components, battery (except as noted below) or components parts thereof. Please refer to the applicable manufacturer's warranty on these items.
2. Transportation charges for the movement of any power equipment unit or attachment are the responsibility of the purchaser. Transportation charges for any parts submitted for replacement under this warranty must be paid by the purchaser unless such return is requested by American Yard Products.
3. **Battery Warranty:** On products equipped with a Battery, we will replace, without charge to you, any battery which we find to be defective in manufacture, during the first ninety (90) days of ownership. After ninety (90) days, we will exchange the Battery, charging you 1/12 of the price of a new Battery for each full month from the date of the original sale. Battery must be maintained in accordance with the instructions furnished.
4. The Warranty period for any products used for rental or commercial purposes is limited to 45 days from the date of original purchase.
5. This Warranty applies only to products which have been properly assembled, adjusted, operated, and maintained in accordance with the instructions furnished. This Warranty does not apply to any product which has been subjected to alteration, misuse, abuse, improper assembly or installation, delivery damage, or to normal wear of the product.
6. **Exclusions:** Excluded from this Warranty are belts, blades, blade adapters, normal wear, normal adjustments, standard hardware and normal maintenance.
7. In the event you have a claim under this Warranty, you must return the product to an authorized service dealer.

Should you have any unanswered questions concerning this Warranty, please contact:

American Yard Products
Service Department
P.O. Box 1687
Orangeburg, SC 29116 USA

In Canada contact:
American Yard Products
1580 Trinity Drive, Units 5-8
Mississauga, Ontario
L5T 1L6

giving the model number, serial number and date of purchase of your product and the name and address of the authorized dealer from whom it was purchased.

THIS WARRANTY DOES NOT APPLY TO INCIDENTAL OR CONSEQUENTIAL DAMAGES AND ANY IMPLIED WARRANTIES ARE LIMITED TO THE SAME TIME PERIODS STATED HEREIN FOR OUR EXPRESSED WARRANTIES. Some areas do not allow the limitation of consequential damages or limitations of how long an implied Warranty may last, so the above limitations or exclusions may not apply to you. This Warranty gives you specific legal rights, and you may have other rights which vary from locale to locale.

This is a limited Warranty within the meaning of that term as defined in the Magnuson-Moss Act of 1975.